

Table of Contents



	Page	Table	Figure
I. UNCA History and Governance			
History of UNCA	2		
Chief Executive Officers	2		
UNCA Vision Statement	3		
UNCA Mission Statement	3		
UNCA Guiding Concepts	4		
UNCA Institutional Goals	6		
UNCA Board of Trustees	7		
UNCA Foundation Board	8		
UNCA National Alumni Advisory Board	10		
 II. Students and Alumni			
Admissions			
<hr/>			
NC Public High School Graduates: History and Projections	12		1
Fall Applications, Acceptances and Enrollments by Sex	13	1	
Out-of-State Freshman Applications, Acceptances and Enrollments by State	14	2	
Distribution of New Freshman Enrollments by Region	15		2
New Freshman Admission Scores by Residence Status	16	3	
Freshman Mean SAT Scores by UNC Institution	17	4	
Fall Freshman SAT Scores and H.S. Rank Distributions	18		3
Percent of New Freshmen in Top 20 % of High School Class by UNC Institution	19	5	
New Fall Transfer Enrollments by Institution Type	20	6	
Source of New Undergraduate Transfer Students	21	7	
Enrollments and Retention			
<hr/>			
Annual FTE History and Projections	22		4
Historical Resident Credit Enrollment Trends and Projections	23	8	
Student Credit Hours by Funding Category: History and Projections	24	9	
Student Enrollment Demographic Profile	25	10	
Fall Enrolled Students by U.S. Region and State	26	11	
Enrolled Students by North Carolina Region and County	28	12	
Minority Presence: Fall Semesters	30	13	
Distribution of Student Age by Class	31	14	
UNC System Undergraduate Student Demographic Comparisons	31	15	
Residence Halls and Number of Students Housed	32	16	
Commuter vs Residence Hall Students	32	17	
Summer School Headcount Enrollment by Class	33	18	
Summer School Headcount, FTE, and SCH Enrollment	33	19	
Distance Education Enrollment by Site	34	20	
Distance Education SCH by Funding Category	34	21	
Retention of New Fall Entering Full-time Freshmen	35	22	
Retention of New Fall Entering Transfers	36	23	

Programs	Page	Table	Figure
Academic Program Inventory	37	24	
Enrollment by Major (Spring Semesters)	38	25	
Degrees Conferred by Academic Area and Major	39	26	
Average Undergraduate Class Size	40	27	
Grade Distribution by Course Level and Academic Year	41	28	
Weighted GPA by Academic Year and Course Level	42		5
Intercollegiate Athletics	43	29	
Asheville Graduate Center Participating Universities and Programs	44	30	
Asheville Graduate Center Fall Headcount Enrollments	44	31	
Summer Conferences	45	32	
Continuing Education Enrollments	45	33	
Financial Aid			
Student Financial Aid by Source	46	34	
Students Receiving Financial Aid	47	35	
Intercollegiate Athletics Grants-In-Aid	48	36	
Alumni			
Current Residence of Alumni by US Region, State and Nation	49	37	
Alumni by North Carolina Region and County	51	38	
III. Faculty and Staff			
UNCA Organizational Chart	54		6
Organizational Chart for Academic & Student Affairs	55		7
Organizational Chart for Administration, Financial and External Affairs	56		8
Organizational Chart for Alumni & Development	57		9
Organization and Personnel	58	39	
Full-Time Employees by Type	61		10
Employees by Employment Status, Job Class, Race and Sex	62	40	
Full-Time Instructional Faculty by Rank, Sex and Tenure Status	63	41	
Full-Time Instructional Faculty with Terminal Degrees by Rank and Department	64	42	
Full-Time Instructional Faculty Salaries by Rank	65	43	
Faculty Salary Comparisons	66	44	
IV. Fiscal Resources			
Current Fund Revenues and Expenditures	68	45	
Operating Expenditures by Function	69	46	
Tuition and Fees Per Year	70	47	
External Grants and Contracts Funding Amounts by Fiscal Year	71	48	
Endowed Funds	72		11
Source of Outright Gift Income by Year	72	49	
Alumni Donations	73	50	
Outright Gift Income Summary	73	51	
Campus Map	74		12
Building Inventory	75	52	
Percent of Space in Satisfactory Condition	76		13
Percent of Space Needing Renovation by Cost Level	76		14
Percentage of General Purpose Classrooms Utilized by Day and Time	77	53	
Classrooms and Labs by Building	78	54	
Residence Hall Capacity and Number of Students Housed	79	55	
Capital Improvements	80	56	
Ramsey Library Resources	80	57	
Computing Facilities	81	58	

History and Governance

History of UNCA

- 1927 Founded as Buncombe County Junior College under the aegis of the Buncombe County public school system
- 1930 Merged with College of the City of Asheville; name changed to Biltmore Junior College
- 1936 Name changed to Asheville-Biltmore College and control passed to the Asheville City School Board
- 1957 Became first institution to qualify as a state-supported community college
- 1961 Institution moved to present location in North Asheville. First black student enrolled
- 1963 Asheville-Biltmore College became a state-supported senior college under a new board of trustees
- 1966 First baccalaureate degrees awarded
- 1969 Asheville-Biltmore College became the University of North Carolina at Asheville, one of six campuses of the Consolidated University
- 1972 The 10 remaining state-supported senior institutions were merged into a unified 16 member system, The University of North Carolina
- 1991 First master's degrees awarded in Liberal Arts
- 1992 Designated as a Liberal Arts I College by the UNC Board of Governors

Chief Executive Officers

1927-1932	S.B. Conley, Dean
1932-1936	A.C. Reynolds, President
1936-1941	Charles A. Lloyd, Dean
1941-1945	J.J. Stevenson, Dean
1945-1946	William H. Morgan, Dean
1946-1947	Clarence N. Gilbert, Dean
1947	R.A. Tomberlin, President
1947-1962	Glenn L. Bushey, President
1962-1969	William E. Highsmith, President
1969-1977	William E. Highsmith, Chancellor
1977	Arnold K. King, Acting Chancellor
1977-1984	William E. Highsmith, Chancellor
1984-1990	David G. Brown, Chancellor
1990-1991	Roy Carroll, Interim Chancellor
1991-1993	Samuel Schuman, Chancellor
1994	Larry Wilson, Interim Chancellor
1994-1999	Patsy Reed, Chancellor
1999-2005	James H. Mullen, Jr., Chancellor
2005-	Anne Ponder, Chancellor

Source: Chancellor's Office

UNCA Vision Statement

We provide the liberal arts experience at its best

UNCA Mission Statement

The University of North Carolina at Asheville offers a superior liberal arts education for well-prepared students who are committed to learning and personal growth. Its education is liberating, promoting the free and rigorous pursuit of truth, respect for differing points of view and heritage, and an understanding that values play a role in thought and action. Through this education the university aims to develop students of broad perspective who think critically and creatively, communicate effectively, and participate actively in their communities. UNCA is North Carolina's only designated public liberal arts university.

Small by choice, UNCA brings together faculty, students, and staff of diverse cultural backgrounds to interact closely in a supportive community. The university makes excellence in teaching the highest priority for its faculty. It fosters scholarship and creative activities by faculty and students alike.

UNCA provides undergraduate programs in the arts, the humanities, the natural and social sciences, and in selected pre-professional programs that are solidly grounded in the liberal arts. The university seeks to connect the traditional liberal arts fields through interdisciplinary studies and to integrate these areas of inquiry with programs that prepare students for rewarding careers. To enhance and extend the undergraduate programs, UNCA offers an interdisciplinary Master of Liberal Arts.

As a public university, UNCA serves the region and state in ways that complement its educational mission. It encourages students, faculty, and staff to interact with and serve the community, and it shares cultural and educational resources with citizens at all stages of life and learning. The university houses the Asheville Graduate Center, the North Carolina Center for Creative Retirement, and other programs which provide opportunities to citizens for continued learning and public service.

The ultimate aim of the university is to provide students the best possible opportunity to acquire the skills, knowledge, and understanding necessary to pursue their goals, to find meaning in their lives, and to take their places as contributing citizens of a changing society.

Vision statement approved by the UNCA Faculty Senate on November 8, 2001

Mission statement approved by the UNCA Board of Trustees on August 24, 2000

UNCA Guiding Concepts

The University of North Carolina at Asheville provides a superior liberal arts education for well-prepared students who are committed to learning and personal growth. Through this education the university aims to develop students of broad perspective who think critically and creatively, communicate effectively, and participate actively in their communities. The ultimate aim of the university is to provide students the best possible opportunity to acquire the skills, knowledge, and understanding necessary to pursue their goals, to find meaning in their lives, and to take their places as contributing citizens of a changing society. In light of these aims, the following concepts guide UNCA.

Who We Are

I. Liberal Arts

Education at UNCA is solidly grounded in the liberal arts. A liberal arts foundation provides the surest means of enabling students to develop in a manner consistent with the aims of the university. In accordance with its designation as North Carolina's public liberal arts university, and consistent with the Carnegie Classification, at least half of all UNCA degrees are awarded in the liberal arts and all degrees are infused with the liberal arts. *The centerpiece of General Education at UNCA is its nationally-recognized Humanities Program, which examines what humanity has achieved, desired, and believed over several thousand years of recorded history, and how these concerns and passions influence today's world.*

II. Diverse and Collaborative Community

The community of students, faculty and staff that is UNCA is diverse and collaborative. UNCA graduates will live and work in an increasingly diverse world. Those who would contribute to such a world must be aware of and sensitive to human diversity, and be able to work with those whose perspectives and backgrounds are not their own. Through a diverse and collaborative community, UNCA recognizes and celebrates human diversity, while preparing students for the future. *In order to facilitate collaboration, and especially collaboration among faculty and students, UNCA is small by choice, seeking no more than 3500 students, with a constantly increasing proportion of residential students.*

III. Environmentally Responsible

UNCA is environmentally aware and responsible. The UNCA campus is the home of more than 1100 residential students and the place where approximately 4000 additional members of the UNCA community spend many of their waking hours. As such, their well being is affected by the quality of the UNCA environment. Through environmental awareness and responsibility, UNCA provides a campus that supports the well being of the UNCA community and serves as an example for others.

IV. Commitment to Excellence and Continuous Improvement

Commitment to excellence in liberal arts education and continuous improvement in all things is characteristic of UNCA life. These commitments focus the efforts and broaden the understandings of the members of the UNCA community so as to best provide for the learning and personal growth of students.

What We Do

V. Emphasis on Learning

Undergraduate learning is the highest priority of UNCA and the learning of faculty and staff is supported. Undergraduate learning, because it profoundly affects the intellectual development of students, is the highest priority of UNCA. To assist in this development, the learning of faculty and staff is also supported. *Consistent with learning on a human scale, classes at UNCA are small enough to allow active involvement and large enough to encompass diverse perspectives.*

VI. Support of Personal Growth

Undergraduate personal growth is strongly supported and the personal growth of faculty and staff is supported. Undergraduate personal growth, because it profoundly affects the overall development of students, is strongly supported by UNCA. To assist in this development, the personal growth of faculty and staff is also supported.

How We Do It

VII. Primary Focus on Teaching

Teaching is the primary focus of UNCA faculty and interdisciplinary teaching is encouraged. Teaching contributes directly to the learning and personal growth of students. Interdisciplinary teaching is encouraged because the ability to connect different areas of knowledge is one of the highest expressions of the intellect, and faculty who demonstrate this ability help students to make such connections themselves.

VIII. Creative, Scholarly and Collaborative Activity

Creative, scholarly and collaborative activity are integral parts of UNCA life, and activities involving students are especially valued. These activities, by the new knowledge and perspectives they bring about, contribute to the learning and personal growth of the UNCA community and to the larger communities of which UNCA is a part. UNCA's Undergraduate Research Program is a nationally-respected expression of student scholarship and collaborative learning. The North Carolina Center for Creative Retirement, UNCA's internationally-recognized program for older learners, provides opportunities for intergenerational learning and collaboration.

IX. Co-curricular Experiences

UNCA provides diverse co-curricular experiences and helps create new ones. Co-curricular activities provide experiences and help form relationships that powerfully affect the personal growth of students. These activities, like the students they serve, are varied and ever changing.

X. Community Involvement

UNCA is involved in the community. Community participation is a responsibility of a public university that contributes to the community while simultaneously enhancing the learning and personal growth of those involved.

XI. Lifelong Relationships with Graduates

UNCA has lifelong relationships with its graduates. Learning and personal growth are the pursuits of a lifetime, not only of the college years. UNCA seeks to contribute to the continued learning and personal growth of its graduates through lifelong relationships. These relationships, through the opportunities they provide, help provide for the learning and personal growth of current students.

(Adopted by UNCA Board of Trustees on March 11, 2001)

UNCA Institutional Goals

1. Provide an excellent liberal arts education emphasizing undergraduate learning, exemplary teaching, and an interdisciplinary approach to understanding.
2. Create, maintain, and enhance an academic community that is diverse and collaborative.
3. Support the personal growth of students, staff, and faculty.
4. Provide diverse co-curricular experiences.
5. Foster creative, scholarly, and collaborative activities with an emphasis on student involvement.
6. Participate in the community and serve as a model of environmental awareness and responsibility.
7. Maintain lifelong relationships among all members of the UNCA community.

Approved by the UNCA Board of Trustees on January 23, 2002

UNCA Board of Trustees
2005 - 2006

<i>Member</i>	<i>Business</i>	<i>Home City</i>	<i>Term Expires</i>
Janice Brumit <i>Acting Chair</i>	Vice President Arby's	Asheville	2009
Michael S. Tanner <i>Secretary</i>	Retired Apparel Manufacturer and Marketer	Rutherfordton	2007
Luther Barnhardt	Retired Radiologist	Asheville	2007
James R. Buckner	Regional Vice President Compass Learning	Sewanee GA	2009
Leslie Coman	Public Affairs Specialist Capstrat	Durham	2009
Chappell A. Carter	Educator	Asheville	2007
Joseph Damore	CED Mission Hospitals	Candler	2009
Tarik Glenn	President UNCA Student Government	Asheville	2006
James A. Shields	President Anderson Hamilton	Winston-Salem	2007
Cissie Stevens	Retired	Asheville	2009
Pamela Turner	Co-Owner Mills Manufacturing	Asheville	2007
Alfred J. Whitesides, Jr.	Vice President Mountain 1st	Asheville	2009

Last update: 11/30/05
Source: Chancellor's Office

UNCA Foundation Board
Fall 2005

<i>Member</i>	<i>Home City</i>	<i>Term Expires</i>
LaVoy Spooner <i>Chair</i>	Fairview	2006 (Term 2)
David Cogburn <i>Associate Chair</i>	Asheville	2007 (Term 2)
Rob Bowen <i>Faculty Representative</i>	Asheville	2006
Bert Holmes <i>Faculty Representative</i>	Asheville	2006
Tarik Glenn <i>Student Representative</i>	Durham	2006
Larry Haas <i>NCCCR Representative</i>	Asheville	2006
Becky Anderson	Asheville	2007 (Term 1)
Charles Atkins	Sylva	2007 (Term 1)
John C. Bernhardt, Jr.	Asheville	2007 (Term 2)
David Brown	Asheville	2007 (Term 1)
Tom Covington	Raleigh	2007 (Term 1)
Bobby Daugherty	Swannanoa	2007 (Term 1)
Al Davis	Asheville	2008 (Term 1)
Sharon Decker	Rutherfordton	2007 (Term 1)
Charles Frederick	Asheville	2008 (Term 1)
Bonnie Habel	Asheville	2007 (Term 2)
James Hegglund	Asheville	2008 (Term 1)
David Holcomb	Asheville	2007 (Term 2)
Craig Madison	Asheville	2008 (Term 1)
Russ Martin	Asheville	2006 (Term 2)
Teri Morris	Asheville	2008 (Term 1)

UNCA Foundation Board
(Continued)

<i>Member</i>	<i>Home City</i>	<i>Term Expires</i>
Ken Partin	Asheville	2008 (Term 1)
Cyndee Patterson	Charlotte	2007 (Term 1)
Robert Peterson	Asheville	2006 (Term 2)
Robert Roberts	Asheville	2007 (Term 1)
Robby Russell	Asheville	2007 (Term 1)
Robert Sipes	Arden	2007 (Term 1)
Ed Towson	Asheville	2007 (Term 1)
Barbara Whitaker	Asheville	2006 (Term 2)

Ex-Officio:

Anne Ponder
Chancellor

William Styres
Interim Vice Chancellor for Finance, Foundation Treasurer

William P. Massey
Vice Chancellor for Alumni & Development, Foundation Secretary

UNCA National Alumni Advisory Council
2005-06

C. Guy Batsel '68.....	Boca Grande, FL
James R. Buckner '71	Suwanee, GA
Robert C. Collett '87.....	Morganton
Steven M. Coster '71	Kensington, MD
Jasmin M. Gentling '99	Asheville
Steve A. Green '01.....	Asheville
David V. Gunter '87.....	Seattle, WA
Melissa Church-Lawton '91.....	Wake Forest
R. Wayne McDevitt '75	Marshall
Audrey B. Mosley '74.....	Washington, DC
Jonathan J. Pullin '90	Charlotte
Donald F. Reynolds, Jr. '87	Wilmington
Neal D. Rhoades, '86.....	Kernersville
James A. Shields '75	Winston Salem
David N. Wells '86	Asheville
Karla L. Worley '97	Dunwoody, GA

Ex-Officio

Anne Ponder	<i>Chancellor</i>
William P. Massey.....	<i>Vice Chancellor for Alumni and Development</i>
Kevan D. Frazier '92	<i>Associate Vice Chancellor for Alumni</i>

Students and Alumni

Figure 1: NC Public High School Graduates: History and Projections

Number of Graduates				
North Carolina Regions				
Year	Eastern	Piedmont	Western	NC Total
83	22,632	36,196	9,955	68,783
84	21,334	35,880	9,589	66,803
85	21,559	35,656	9,497	66,712
86	21,361	35,105	9,399	65,865
87	20,482	35,946	9,617	66,045
88	21,426	37,233	9,489	68,148
89	22,112	37,853	9,744	69,709
90	20,732	34,951	8,838	64,521
91	20,447	33,403	8,683	62,533
92	20,039	32,308	8,564	60,911
93	20,019	31,974	8,218	60,211
94	19,107	30,568	7,820	57,495
95	19,767	31,494	8,011	59,272
96	18,593	30,513	7,664	56,770
97	18,655	31,416	7,815	57,886
98	18,946	32,099	8,004	59,049
99	18,848	32,916	8,012	59,776
00	19,446	34,281	8,160	61,887
01	19,755	35,153	8,106	63,014
02	20,187	37,015	8,479	65,681
03	20,889	40,006	8,673	69,568
04	21,560	41,460	8,833	71,853
05	20,508	43,932	9,047	73,487
06	20,702	45,113	9,077	74,892
07	21,034	46,290	9,158	76,482
08	21,643	47,544	9,334	78,521
09	22,193	48,421	9,623	80,237
10	22,576	48,918	9,918	81,412
11	22,543	49,352	9,999	81,894
12	22,490	49,768	10,068	82,326
13	22,266	50,214	9,974	82,454
14	22,042	50,660	9,880	82,582
15	21,808	51,107	9,787	82,702

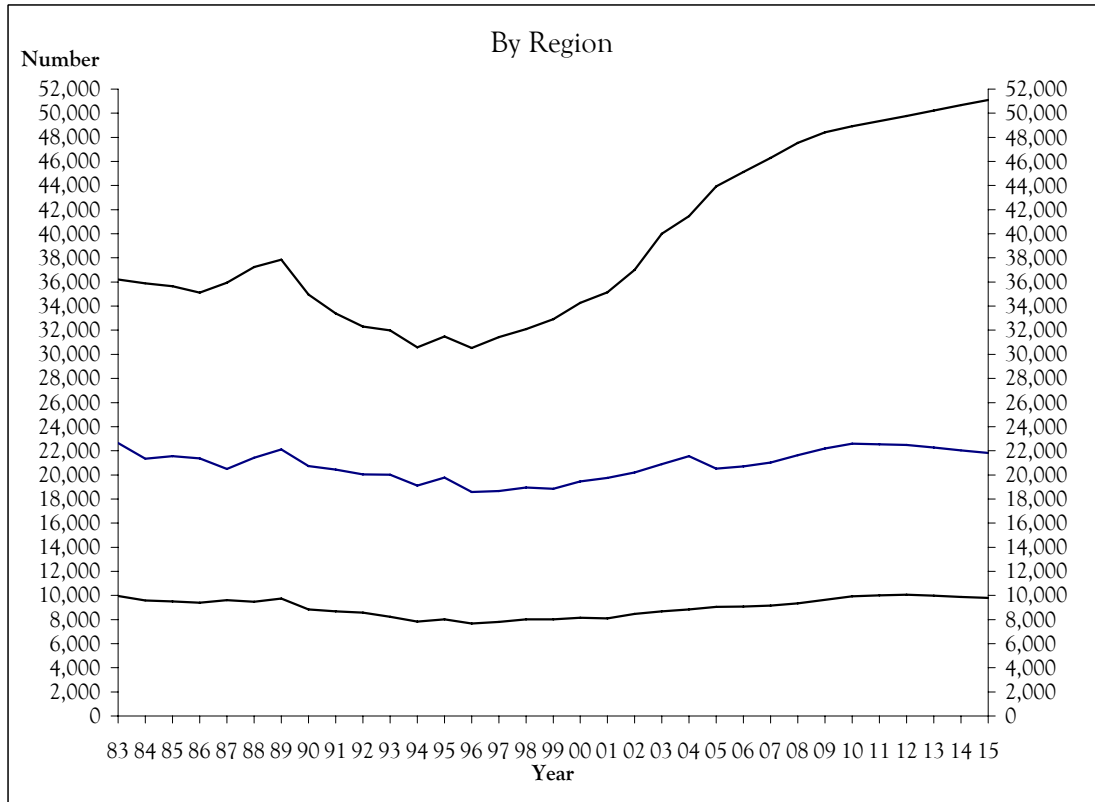
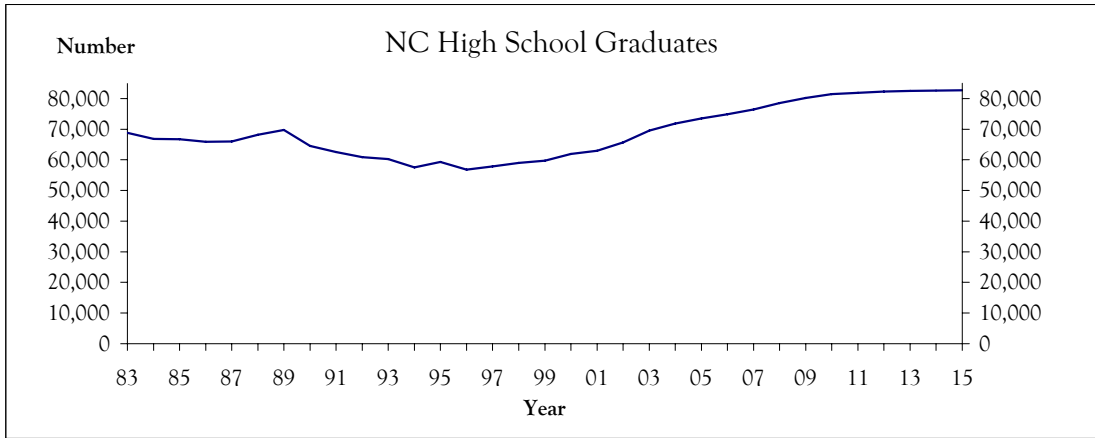


Table 1
 Fall Applications*, Acceptances and Enrollments
 New Degree-Seeking Students by Sex: Three-Year Trend

		2003			2004			2005		
		Female	Male	Total	Female	Male	Total	Female	Male	Total
First-Time Freshmen	Number of Applicants	1,273	1021	2,294	1,424	1147	2,571	1,395	967	2,362
	Number Accepted	975	689	1,664	1118	752	1,870	953	529	1,482
	Accept/Apply Ratio	76.6	67.5	72.5	78.5	65.6	72.7	68.3	54.7	62.7
	Number Enrolled	334	265	599	425	282	707	291	181	472
	Enroll/Accept Ratio	34.3	38.5	36.0	38.0	37.5	37.8	30.5	34.2	31.8
New Transfers	Number of Applicants	297	229	526	262	203	465	341	240	581
	Number Accepted	260	191	451	223	166	389	289	179	468
	Accept/Apply Ratio	87.5	83.4	85.7	85.1	81.8	83.7	84.8	74.6	80.6
	Number Enrolled	174	130	304	128	99	227	174	114	288
	Enroll/Accept Ratio	66.9	68.1	67.4	57.4	59.6	58.4	60.2	63.7	61.5
New Graduate Students	Number of Applicants	10	3	13	12	4	16	12	5	17
	Number Accepted	10	3	13	12	4	16	12	5	17
	Accept/Apply Ratio	100.0	100.0	100.0	100.0	100.0	100.0	100.0	100.0	100.0
	Number Enrolled	6	2	8	10	3	13	11	4	15
	Enroll/Accept Ratio	60.0	66.7	61.5	83.3	75.0	81.3	91.7	80.0	88.2

* Completed applications with decision.

Table 2
Out-of-State Freshman Applications, Acceptances and Enrollments by State

	2003			2004			2005		
	Applied	Accepted	Enrolled	Applied	Accepted	Enrolled	Applied	Accepted	Enrolled
American Abroad	-	-	-	1	1	0	1	0	0
Alaska	1	1	0	2	1	0	1	1	1
Alabama	14	9	1	17	13	3	15	10	1
Arkansas	1	0	0	4	2	2	2	2	0
American Samoa	-	-	-	-	-	-	1	0	0
Arizona	-	-	-	1	1	0	5	3	0
California	14	6	2	9	6	0	14	5	1
Colorado	8	5	3	5	3	1	5	2	0
Connecticut	19	10	3	30	16	4	18	6	0
District of Columbia	11	5	1	5	3	0	4	1	0
Delaware	5	4	1	3	3	0	1	0	0
Florida	64	46	11	60	38	14	67	41	11
Georgia	89	53	11	112	81	20	85	50	10
Hawaii	-	-	-	1	0	0	1	1	0
Iowa	5	5	2	2	1	1	2	2	0
Idaho	1	1	0	1	1	0	-	-	-
Illinois	22	15	6	21	11	5	21	15	4
Indiana	2	1	0	6	3	2	6	5	2
Kansas	6	4	0	7	6	0	3	2	1
Kentucky	8	4	2	12	8	4	11	6	3
Louisiana	9	6	1	6	2	1	9	4	0
Massachusetts	26	16	4	30	16	1	27	13	1
Maryland	47	34	10	54	31	5	45	18	3
Maine	7	5	2	7	6	2	4	3	0
Michigan	10	8	1	12	5	0	11	6	2
Minnesota	10	7	1	5	4	1	6	2	0
Missouri	8	8	2	4	2	1	4	3	0
Mississippi	3	3	1	6	4	0	4	2	1
Montana	1	1	0	-	-	-	-	-	-
North Carolina	1	1	0	1	0	0	-	-	-
North Dakota	2	2	1	-	-	-	1	0	0
Nebraska	3	3	0	1	1	0	-	-	-
New Hampshire	6	3	1	7	2	0	4	2	1
New Jersey	37	25	3	44	22	2	46	25	3
New Mexico	1	1	1	-	-	-	-	-	-
Nevada	-	-	-	-	-	-	1	1	0
New York	45	24	4	35	22	4	41	20	3
Ohio	23	12	2	26	15	6	25	15	2
Oklahoma	5	2	0	2	1	1	1	0	0
Oregon	1	1	0	3	2	1	2	2	0
Pennsylvania	35	25	6	33	17	4	34	16	5
Rhode Island	6	4	1	4	3	1	3	2	0
South Carolina	38	26	3	45	26	8	37	12	4
Tennessee	68	52	11	64	47	15	62	46	7
Texas	14	10	1	27	22	5	17	10	2
Utah	3	2	0	3	3	0	1	1	1
Virginia	77	47	14	90	62	20	57	36	7
Virgin Islands	1	0	0	-	-	-	-	-	-
Vermont	6	2	0	5	4	1	9	6	0
Washington	-	-	-	4	3	0	-	-	-
Wisconsin	4	1	1	10	6	0	7	6	0
West Virginia	10	9	4	11	9	2	5	2	0
Wyoming	1	0	0	-	-	-	1	0	0
International	42	20	10	28	14	3	27	20	3
	820	529	128	866	549	140	754	425	79

Figure 2: Distribution of New Freshman Enrollments by Region
Fall Semesters

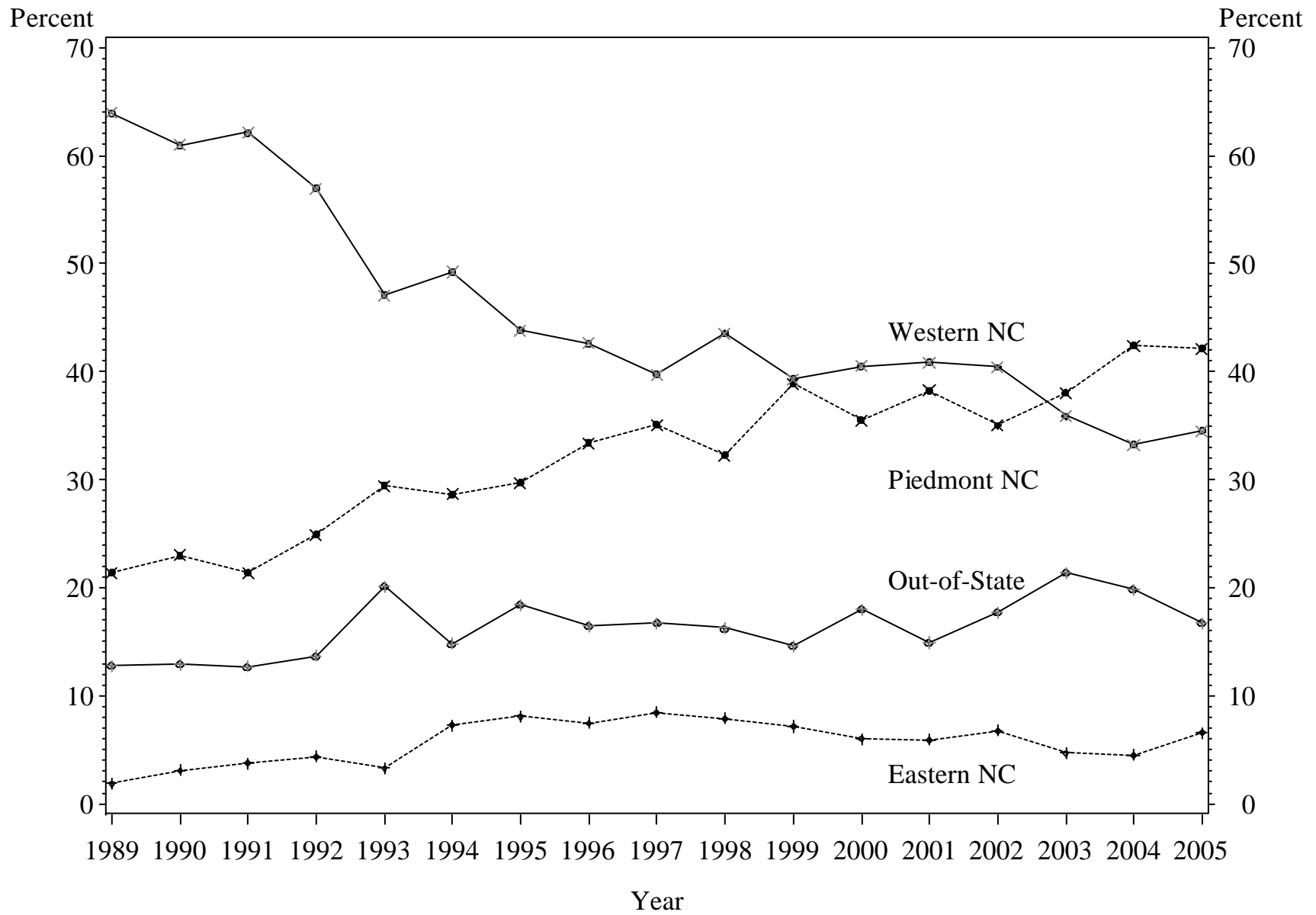


Table 3
New Freshman Admission Scores
by Residence Status

Fall Semester		N	Combined SAT			Top 20%	H.S.
			Mean	%tile	%tile	H.S. Class	GPA
						Percent	Mean
1996	In-State	380	1,141	1,050	1,240	51.7	3.62
	Out-of-State	75	1,144	1,060	1,240	52.6	3.41
	Year Total	455	1,141	1,050	1,240	51.9	3.59
1997	In-State	394	1,150	1,060	1,240	53.7	3.69
	Out-of-State	79	1,149	1,080	1,220	42.9	3.39
	Year Total	473	1,150	1,070	1,240	52.3	3.64
1998	In-State	402	1,143	1,045	1,240	52.9	3.68
	Out-of-State	78	1,131	1,030	1,230	49.1	3.54
	Year Total	480	1,142	1,040	1,230	52.4	3.66
1999	In-State	393	1,153	1,060	1,240	51.2	3.72
	Out-of-State	67	1,134	1,050	1,210	50.0	3.46
	Year Total	460	1,151	1,060	1,240	51.1	3.69
2000	In-State	411	1,155	1,060	1,240	51.6	3.72
	Out-of-State	90	1,155	1,070	1,230	49.2	3.49
	Year Total	501	1,155	1,070	1,230	51.2	3.68
2001	In-State	387	1,163	1,070	1,240	53.4	3.79
	Out-of-State	68	1,139	1,040	1,250	61.4	3.69
	Year Total	455	1,160	1,060	1,240	54.3	3.77
2002	In-State	352	1,164	1,050	1,260	50.6	3.74
	Out-of-State	76	1,138	1,060	1,240	45.1	3.62
	Year Total	428	1,160	1,060	1,260	49.9	3.72
2003	In-State	471	1,164	1,070	1,260	43.4	3.72
	Out-of-State	128	1,173	1,080	1,250	52.0	3.56
	Year Total	599	1,166	1,070	1,250	44.7	3.70
2004	In-State	567	1,166	1,070	1,250	44.1	3.75
	Out-of-State	140	1,184	1,100	1,270	45.1	3.58
	Year Total	707	1,169	1,080	1,250	44.3	3.73
2005	In-State	393	1,184	1,090	1,280	54.9	3.85
	Out-of-State	79	1,176	1,045	1,280	51.0	3.65
	Year Total	472	1,183	1,090	1,280	54.5	3.82

Table 4
Freshman Mean SAT Scores by UNC Institution

UNC School	1995	1996	1997	1998	1999	2000	2001	2002	2003	2004	2005
UNCCH	1222	1222	1220	1230	1245	1251	1257	1267	1282	1287	1299
UNCA	1133	1141	1150	1142	1151	1155	1160	1160	1166	1169	1184
NCSU	1149	1148	1154	1159	1179	1185	1175	1193	1195	1193	1183
UNCW	1062	1055	1080	1082	1086	1097	1091	1106	1104	1126	1134
ASU	1094	1087	1076	1075	1092	1086	1101	1111	1115	1123	1131
NCSA	1154	1107	1139	1136	1109	1104	1113	1154	1153	1105	1123
UNCC	1035	1023	1015	1013	1034	1043	1052	1065	1069	1079	1082
UNCG	1011	1027	1028	1030	1038	1037	1033	1035	1045	1045	1051
ECU	1018	1015	1014	1019	1016	1035	1029	1036	1048	1043	1042
WCU	965	983	980	998	994	1004	1011	1012	1023	1027	1027
UNCP	938	898	914	921	932	927	924	934	950	948	938
WSSU	870	851	849	845	837	869	865	868	867	888	900
NCAT	953	933	928	922	911	896	898	899	889	889	893
NCCU	931	912	894	898	876	860	861	852	834	855	861
ECSU	857	840	825	823	823	822	837	817	848	841	849
FSU	915	867	833	833	867	840	845	868	867	845	847
UNC Average	1068	1061	1060	1064	1068	1073	1071	1072	1075	1079	1082
N.C. Average	970	976	978	982	986	988	992	998	1001	1006	1010
U.S. Average	1010	1013	1016	1017	1016	1019	1020	1020	1026	1026	1028

Source: UNC General Administration

Figure 3: Fall 2005 Freshman SAT Scores and H.S. Rank Distributions

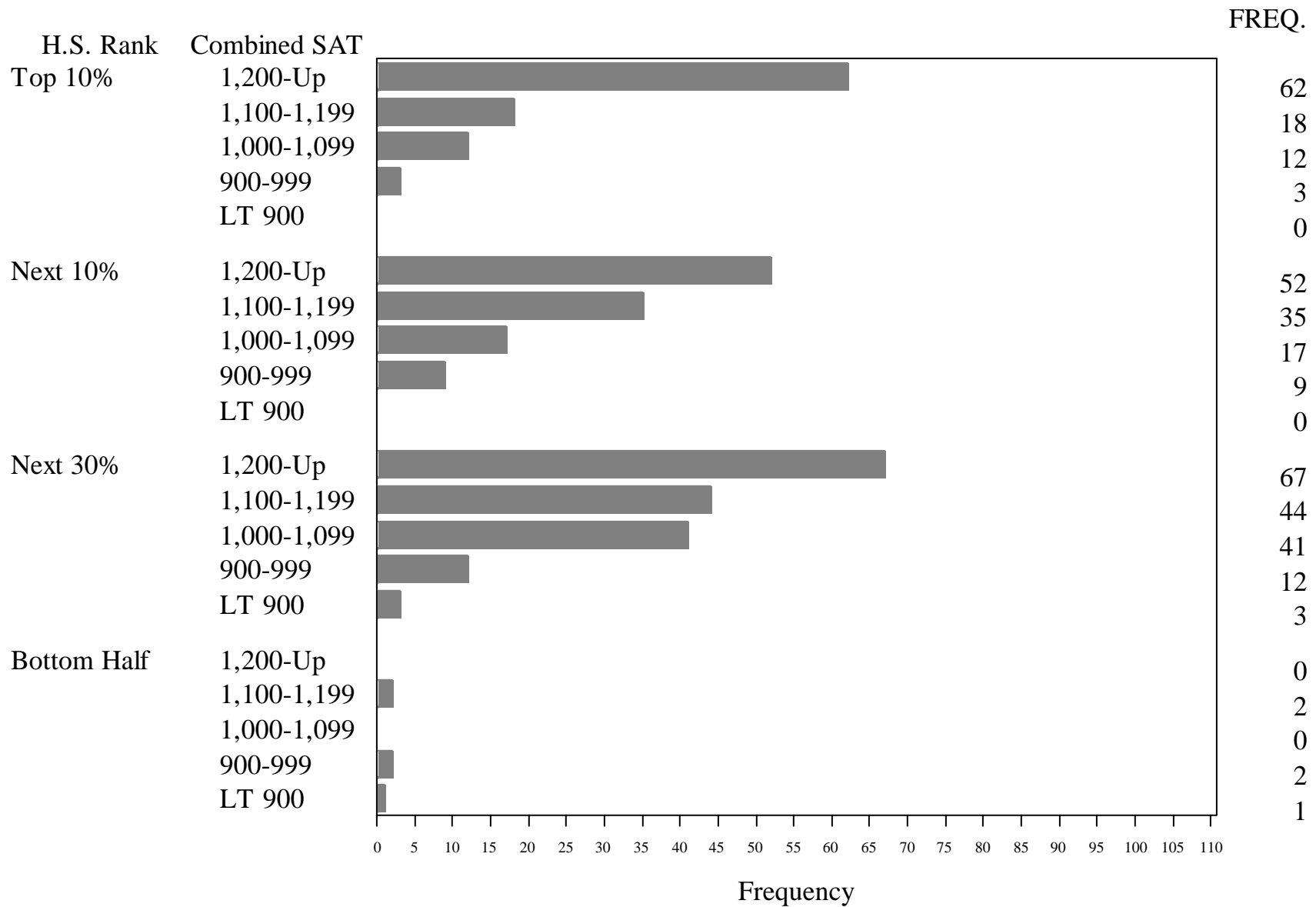


Table 5
Percent of New Freshmen in Top 20% of High School Class
by UNC Institution

UNC School	1994	1995	1996	1997	1998	1999	2000	2001	2002	2003	2004	2005
UNCCH	90	89	90	88	88	88	88	86	90	90	92	92
NCSU	59	59	59	57	61	67	67	64	68	71	74	68
UNCA	56	60	52	52	53	52	51	54	49	45	45	54
UNCW	46	45	43	43	41	45	48	41	49	52	50	49
ASU	48	45	44	40	36	41	36	38	40	39	37	39
UNCG	29	28	34	34	36	34	35	32	32	32	33	35
ECU	32	33	33	33	32	29	33	30	29	35	30	33
NCSA	27	40	27	33	27	.	33	33	40	42	20	30
UNCC	47	41	39	36	36	35	40	41	35	36	37	28
UNCP	33	33	28	30	27	26	23	23	21	25	24	23
WCU	24	21	21	22	20	19	20	22	22	21	23	22
NCAT	25	21	18	20	18	15	15	15	14	15	16	15
FSU	20	19	16	13	11	16	12	12	16	15	14	13
ECSU	24	19	20	14	11	12	12	13	14	14	13	13
WSSU	20	16	13	11	10	9	17	13	12	11	11	13
NCCU	21	20	18	18	14	10	11	11	14	11	12	12

Source: UNC General Administration

Table 6
New Fall Transfer Enrollments by Institution Type

			2001		2002		2003		2004		2005	
			N	%	N	%	N	%	N	%	N	%
North Carolina	Public	Senior Institutions	59	17.7	67	17.5	50	16.4	31	13.7	37	12.8
		Community Colleges	145	43.5	168	44.0	113	37.2	110	48.5	138	47.9
	Private	Senior Institutions	19	5.7	35	9.2	26	8.6	14	6.2	16	5.6
		Junior Institutions	1	0.3	3	0.8	2	0.7	1	0.4	-	-
		Other	4	1.2	3	0.8	1	0.3	3	1.3	-	-
	Other	Unknown	-	-	-	-	2	0.7	-	-	-	-
Total		228	68.5	276	72.3	194	63.8	159	70.0	191	66.3	
Out-of-State	Public	Senior Institutions	33	9.9	37	9.7	40	13.2	27	11.9	40	13.9
		Junior Institutions	45	13.5	40	10.5	35	11.5	21	9.3	30	10.4
		Other	1	0.3	-	-	1	0.3	1	0.4	1	0.3
	Private	Senior Institutions	17	5.1	17	4.5	26	8.6	13	5.7	20	6.9
		Junior Institutions	4	1.2	3	0.8	1	0.3	-	-	1	0.3
		Other	3	0.9	2	0.5	2	0.7	1	0.4	1	0.3
	Other	Foreign Institutions	1	0.3	4	1.0	3	1.0	5	2.2	4	1.4
		Unknown	1	0.3	3	0.8	2	0.7	-	-	-	-
	Total		105	31.5	106	27.7	110	36.2	68	30.0	97	33.7
	Grand Total All Institutions			333	100.0	382	100.0	304	100.0	227	100.0	288

Table 7
Source of New Undergraduate Transfer Students
Fall 2005

Institution	Apply	Accept	Enroll
Asheville - Buncombe Technical Community College	96	75	59
Blue Ridge Community College	25	18	15
Western Piedmont Community College	16	14	10
University of North Carolina at Greensboro	12	11	9
Central Piedmont Community College	15	8	7
North Carolina State University	9	9	7
Western Carolina University	15	8	6
Isothermal Community College	9	5	5
Wake Technical Community College	13	9	5
Cape Fear Community College	8	6	4
University of North Carolina at Charlotte	8	6	4
Appalachian State University	10	6	3
Caldwell Community College and Technical Institute	6	3	3
Catawba Valley Community College	7	6	3
Greenville Technical College, SC	8	5	3
Mayland Community College	6	4	3
University of North Carolina at Wilmington	10	8	3
Warren Wilson College	5	3	3
Other	197	166	136
Total			288

Note: Colleges enrolling fewer than three are counted in the "Other" category
Applications and Accepts counted only for colleges enrolling students.

Figure 4
Annual FTE History and Projections

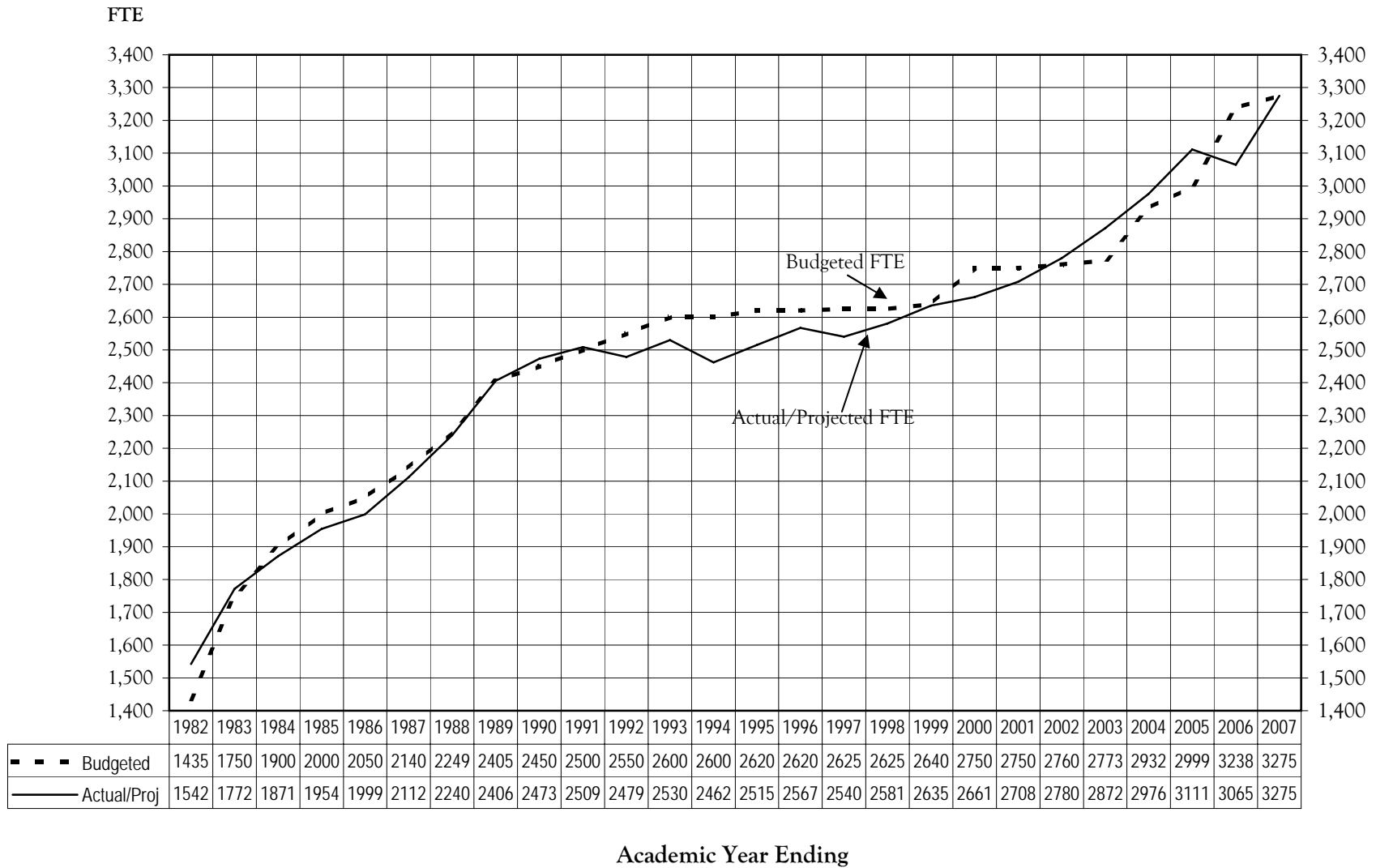


Table 8
Historical Resident Credit Enrollment Trends and Projections

Year	Fall						AY FTE			Budget Target	Year
	Headcount			FTE			Undergrad	Grad	Total		
	Undergrad	Grad	Total	Undergrad	Grad	Total					
1981-82	2,266		2,266	1,575		1,575	1,542		1,542	1,435	1981-82
1982-83	2,520		2,520	1,835		1,835	1,772		1,772	1,750	1982-83
1983-84	2,648		2,648	1,938		1,938	1,871		1,871	1,900	1983-84
1984-85	2,651		2,651	1,965		1,965	1,954		1,954	2,000	1984-85
1985-86	2,686		2,686	2,022		2,022	1,999		1,999	2,050	1985-86
1986-87	2,939		2,939	2,193		2,193	2,112		2,112	2,140	1986-87
1987-88	3,061		3,061	2,341		2,341	2,240		2,240	2,249	1987-88
1988-89	3,152		3,152	2,432		2,432	2,391	13	2,404	2,405	1988-89
1989-90	3,233	58	3,291	2,518	33	2,551	2,438	35	2,473	2,450	1989-90
1990-91	3,259	51	3,310	2,563	27	2,590	2,486	28	2,514	2,500	1990-91
1991-92	3,200	61	3,261	2,523	31	2,554	2,462	28	2,490	2,550	1991-92
1992-93	3,226	51	3,277	2,582	25	2,607	2,503	27	2,530	2,600	1992-93
1993-94	3,111	54	3,165	2,496	29	2,525	2,434	28	2,462	2,600	1993-94
1994-95	3,155	40	3,195	2,564	22	2,586	2,491	24	2,515	2,620	1994-95
1995-96	3,176	46	3,222	2,616	28	2,644	2,538	29	2,567	2,620	1995-96
1996-97	3,036	56	3,092	2,572	33	2,605	2,511	30	2,541	2,625	1996-97
1997-98	3,137	42	3,179	2,635	25	2,660	2,557	24	2,581	2,625	1997-98
1998-99	3,135	40	3,175	2,688	24	2,712	2,613	23	2,636	2,640	1998-99
1999-00	3,125	39	3,164	2,713	24	2,737	2,640	26	2,666	2,750	1999-00
2000-01	3,187	47	3,234	2,764	22	2,786	2,686	22	2,708	2,750	2000-01
2001-02	3,211	36	3,247	2,828	17	2,845	2,752	21	2,773	2,760	2001-02
2002-03	3,254	40	3,294	2,896	22	2,918	2,846	23	2,869	2,773	2002-03
2003-04	3,312	36	3,348	2,999	21	3,020	2,930	25	2,951	2,932	2003-04
2004-05	3,450	35	3,485	3,179	21	3,200	3,088	23	3,111	2,999	2004-05
2005-06	3,361	37	3,398	3,086	21	3,107	3,011	21	3,032	3,238	2005-06
2006-07	3,511	50	3,561	3,223	28	3,251	3,245	30	3,275	3,275	2006-07

Last Update: January 31, 2006

Table 9
Student Credit Hours (SCH) by Funding Category: History and Projections

AY	Student Credit Hours						
	Undergraduate					Graduate	
	Category 1	Category 2	Category 3	Category 4	Total	Category 1	Total
1986-87	29,215	18,671	12,423	222	60,531		60,531
1987-88	31,491	19,125	13,096	216	63,928		63,928
1988-89	33,369	19,783	15,422	179	68,753	180	68,933
1989-90	33,112	20,029	16,252	198	69,591	465	70,056
1990-91	33,268	21,158	17,077	191	71,694	373	72,067
1991-92	31,675	21,115	18,859	267	71,916	393	72,309
1992-93	31,163	21,304	20,443	256	73,166	377	73,543
1993-94	31,002	20,715	20,034	249	72,000	338	72,338
1994-95	31,987	20,477	20,340	241	73,045	351	73,396
1995-96	33,075	20,019	20,626	271	73,991	420	74,411
1996-97	32,712	19,734	20,464	186	73,096	405	73,501
1997-98	33,693	20,010	20,218	278	74,199	387	74,586
1998-99	34,839	22,876	18,184	305	76,204	351	76,555
1999-00	34,469	19,847	22,016	413	76,745	363	77,108
2000-01	34,484	20,170	22,443	491	77,588	308	77,896
2001-02	35,003	21,006	23,240	161	79,410	305	79,715
2002-03	35,783	22,385	23,665	466	82,299	334	82,633
2003-04	38,454	23,152	23,391	637	85,634	307	85,941
2004-05	33,132	29,259	26,272	0	88,663	347	89,010
2005-06	33,402	26,024	28,089	27	87,542	312	87,854
2006-07	35,166	31,055	27,884	0	94,105	427	94,532

Last Update: January 31, 2006

Funding Categories

Category 1: Communication, English Literature and Language, Math, Philosophy and Religion, Psychology, Social Sciences, History

Category 2: Area Studies, Education, Foreign Languages, Interdisciplinary Studies, Liberal Studies, Business Management

Category 3: Biology, Computer Science, Environmental Science, Library Science, Physical Sciences, Multimedia Arts and Sciences, Visual and Performing Arts

Category 4: Engineering

Table 10
Student Enrollment Demographic Profile
Fall 2005

	Undergraduate							Graduate			Grand Total
	New Freshmen	Other Freshmen	Sophomores	Juniors	Seniors	Non-Degree	Total	Masters Candidate	Special Graduate	Total	
Full-Time	471	231	698	694	668	58	2,820	5		5	2,825
Part-Time	1	18	51	75	217	179	541	24	8	32	573
In State	393	207	603	659	792	203	2,857	29	6	35	2,892
Out of State	79	42	146	110	93	34	504		2	2	506
Male	181	114	319	311	386	81	1,392	10	4	14	1,406
Female	291	135	430	458	499	156	1,969	19	4	23	1,992
White	419	214	687	707	790	210	3,027	28	7	35	3,062
Black	11	7	17	18	18	4	75	1		1	76
Hispanic	9	9	6	12	16	3	55				55
Asian	10	5	8	7	19	2	51				51
Amer Indian	1	3	4		1		9				9
Other Minority	11	5	12	9	17	2	56				56
Race Unknown	8	4	11	8	13	3	47		1	1	48
International	3	2	4	8	11	13	41				41
Dorm Students	411	123	308	127	76	17	1,062				1,062
Headcount	472	249	749	769	885	237	3,361	29	8	37	3,398

Table 11
Fall Enrolled Students by U.S. Region and State
(International Students by Country)

		2003		2004		2005	
		Enrolled	%	Enrolled	%	Enrolled	%
The South	Alabama	15	0.4	20	0.6	15	0.4
	Arkansas	2	0.1	5	0.1	4	0.1
	Florida	37	1.1	40	1.1	43	1.3
	Georgia	44	1.3	58	1.7	60	1.8
	Kentucky	10	0.3	7	0.2	9	0.3
	Louisiana	5	0.1	7	0.2	11	0.3
	Mississippi	1	0.0	2	0.1	5	0.1
	North Carolina	2,888	86.3	2,969	85.1	2,886	84.9
	South Carolina	17	0.5	21	0.6	25	0.7
	Tennessee	34	1.0	41	1.2	37	1.1
	Virginia	42	1.3	57	1.6	46	1.4
	West Virginia	6	0.2	6	0.2	5	0.1
	Region Total	3,101	92.6	3,233	92.7	3,146	92.6
Mid-Atlantic	Delaware	2	0.1	1	0.0	1	0.0
	District of Columbia	2	0.1	2	0.1	2	0.1
	Maryland	32	1.0	29	0.8	26	0.8
	New Jersey	10	0.3	9	0.3	10	0.3
	New York	15	0.4	17	0.5	14	0.4
	Pennsylvania	20	0.6	24	0.7	25	0.7
	Region Total	81	2.4	82	2.4	78	2.3
New England	Connecticut	8	0.2	12	0.3	12	0.4
	Maine	4	0.1	5	0.1	8	0.2
	Massachusetts	12	0.4	9	0.3	8	0.2
	New Hampshire	4	0.1	3	0.1	2	0.1
	Rhode Island	1	0.0	1	0.0	0	0.0
	Vermont	1	0.0	3	0.1	5	0.1
Region Total	30	0.9	33	0.9	35	1.0	
Midwest	Illinois	19	0.6	17	0.5	17	0.5
	Indiana	1	0.0	3	0.1	6	0.2
	Iowa	2	0.1	2	0.1	3	0.1
	Kansas	0	0.0	0	0.0	2	0.1
	Michigan	9	0.3	6	0.2	8	0.2
	Minnesota	2	0.1	2	0.1	1	0.0
	Missouri	4	0.1	4	0.1	4	0.1
	North Dakota	1	0.0	1	0.0	1	0.0
	Ohio	15	0.4	16	0.5	11	0.3
	South Dakota	0	0.0	0	0.0	1	0.0
	Wisconsin	4	0.1	2	0.1	3	0.1
Region Total	57	1.7	53	1.5	57	1.7	
The Southwest	Arizona	1	0.0	1	0.0	1	0.0
	New Mexico	1	0.0	0	0.0	0	0.0
	Oklahoma	4	0.1	6	0.2	4	0.1
	Texas	10	0.3	10	0.3	10	0.3
	Region Total	16	0.5	17	0.5	15	0.4
The West	Alaska	0	0.0	0	0.0	1	0.0
	California	6	0.2	4	0.1	6	0.2
	Colorado	7	0.2	7	0.2	7	0.2
	Hawaii	0	0.0	1	0.0	0	0.0
	Idaho	0	0.0	0	0.0	1	0.0

Table 11
Fall Enrolled Students by U.S.Region and State
(International Students by Country)

		2003		2004		2005		
		Enrolled	%	Enrolled	%	Enrolled	%	
	Montana	0	0.0	1	0.0	0	0.0	
	Oregon	0	0.0	2	0.1	1	0.0	
	Utah	0	0.0	0	0.0	1	0.0	
	Washington	2	0.1	1	0.0	1	0.0	
	Wyoming	0	0.0	0	0.0	1	0.0	
	Region Total	15	0.4	16	0.5	19	0.6	
Unknown	Unknown	6	0.2	7	0.2	7	0.2	
	Region Total	6	0.2	7	0.2	7	0.2	
International	Argentina	1	0.0	2	0.1	2	0.1	
	Bosnia-Hercegovina	0	0.0	1	0.0	1	0.0	
	Brazil	1	0.0	1	0.0	2	0.1	
	Cameroon	0	0.0	1	0.0	1	0.0	
	Canada	3	0.1	4	0.1	5	0.1	
	Croatia	1	0.0	0	0.0	0	0.0	
	Denmark	0	0.0	2	0.1	0	0.0	
	Ecuador	0	0.0	1	0.0	1	0.0	
	Finland	2	0.1	2	0.1	1	0.0	
	France	4	0.1	4	0.1	5	0.1	
	Germany	1	0.0	2	0.1	3	0.1	
	Guatemala	0	0.0	1	0.0	0	0.0	
	Honduras	0	0.0	1	0.0	0	0.0	
	Hungary	0	0.0	1	0.0	0	0.0	
	Iceland	1	0.0	0	0.0	0	0.0	
	India	1	0.0	0	0.0	0	0.0	
	Indonesia	0	0.0	2	0.1	2	0.1	
	Ireland	1	0.0	1	0.0	1	0.0	
	Jamaica	0	0.0	1	0.0	0	0.0	
	Japan	4	0.1	4	0.1	3	0.1	
	Lebanon	1	0.0	0	0.0	0	0.0	
	Mariana Islands	0	0.0	1	0.0	0	0.0	
	Mexico	2	0.1	2	0.1	3	0.1	
	Netherlands	1	0.0	0	0.0	0	0.0	
	Netherlands Antilles	0	0.0	1	0.0	0	0.0	
	New Zealand	5	0.1	2	0.1	1	0.0	
	Nicaragua	1	0.0	0	0.0	0	0.0	
	Panama	1	0.0	0	0.0	0	0.0	
	Russia	0	0.0	0	0.0	1	0.0	
	Saudi Arabia	0	0.0	1	0.0	0	0.0	
	South Africa	1	0.0	1	0.0	1	0.0	
	South Korea	2	0.1	2	0.1	3	0.1	
	Spain	1	0.0	0	0.0	1	0.0	
	Sweden	2	0.1	2	0.1	0	0.0	
	Turkey	1	0.0	1	0.0	1	0.0	
	United Kingdom	3	0.1	2	0.1	2	0.1	
	Venezuela	1	0.0	1	0.0	1	0.0	
	Region Total	42	1.3	47	1.3	41	1.2	
	Total		3,348	100.0	3,488	100.0	3,398	100.0

Table 12
Fall Enrolled Students by North Carolina Region and County

		2003		2004		2005		
		Enrolled	%	Enrolled	%	Enrolled	%	
Western NC	Alleghany	3	0.1	3	0.1	1	0.0	
	Ashe	5	0.2	5	0.2	5	0.2	
	Avery	9	0.3	6	0.2	7	0.2	
	Buncombe	1,104	38.2	1,116	37.4	1,070	37.0	
	Burke	49	1.7	51	1.7	51	1.8	
	Caldwell	11	0.4	11	0.4	11	0.4	
	Cherokee	25	0.9	18	0.6	14	0.5	
	Clay	6	0.2	5	0.2	6	0.2	
	Graham			1	0.0			
	Haywood	66	2.3	54	1.8	45	1.6	
	Henderson	188	6.5	189	6.3	170	5.9	
	Jackson	22	0.8	15	0.5	14	0.5	
	Macon	18	0.6	18	0.6	17	0.6	
	Madison	33	1.1	38	1.3	42	1.5	
	McDowell	45	1.6	40	1.3	38	1.3	
	Mitchell	10	0.3	11	0.4	9	0.3	
	Polk	27	0.9	32	1.1	42	1.5	
	Rutherford	41	1.4	41	1.4	30	1.0	
	Surry	13	0.4	18	0.6	14	0.5	
	Swain	7	0.2	4	0.1	3	0.1	
	Transylvania	60	2.1	50	1.7	52	1.8	
	Watauga	36	1.2	30	1.0	28	1.0	
	Wilkes	9	0.3	11	0.4	9	0.3	
	Yancey	47	1.6	49	1.6	36	1.2	
		Region Total	1,834	63.4	1,816	60.9	1,714	59.3
	Piedmont NC	Alamance	22	0.8	23	0.8	18	0.6
Alexander		4	0.1	2	0.1	3	0.1	
Anson		4	0.1	2	0.1	2	0.1	
Cabarrus		20	0.7	20	0.7	19	0.7	
Caswell				1	0.0	2	0.1	
Catawba		50	1.7	39	1.3	43	1.5	
Chatham		16	0.6	16	0.5	20	0.7	
Cleveland		8	0.3	10	0.3	12	0.4	
Davidson		20	0.7	20	0.7	17	0.6	
Davie		7	0.2	12	0.4	16	0.6	
Durham		43	1.5	35	1.2	34	1.2	
Forsyth		100	3.5	110	3.7	109	3.8	
Franklin		5	0.2	5	0.2	7	0.2	
Gaston		34	1.2	33	1.1	27	0.9	
Granville				2	0.1	3	0.1	
Guilford		70	2.4	78	2.6	79	2.7	
Iredell		27	0.9	28	0.9	29	1.0	
Lee		4	0.1	3	0.1	3	0.1	
Lincoln		9	0.3	17	0.6	16	0.6	
Mecklenburg		117	4.0	139	4.7	152	5.3	
Montgomery		3	0.1	3	0.1	2	0.1	
Moore		12	0.4	18	0.6	14	0.5	
Orange		91	3.1	128	4.3	133	4.6	
Person		5	0.2	5	0.2	4	0.1	
Randolph		11	0.4	15	0.5	13	0.4	
Richmond		4	0.1	3	0.1	3	0.1	
Rockingham	14	0.5	13	0.4	8	0.3		
Rowan	25	0.9	25	0.8	19	0.7		
Stanly	7	0.2	5	0.2	4	0.1		

Table 12
Fall Enrolled Students by North Carolina Region and County

		2003		2004		2005	
		Enrolled	%	Enrolled	%	Enrolled	%
	Stokes	4	0.1	7	0.2	8	0.3
	Union	17	0.6	24	0.8	25	0.9
	Vance	2	0.1	2	0.1	1	0.0
	Wake	148	5.1	161	5.4	165	5.7
	Warren					1	0.0
	Yadkin	2	0.1	2	0.1	1	0.0
	Region Total	905	31.3	1,006	33.7	1,012	35.0
Eastern NC	Bladen	1	0.0	1	0.0	1	0.0
	Brunswick	7	0.2	7	0.2	9	0.3
	Camden	1	0.0	1	0.0	2	0.1
	Carteret	8	0.3	10	0.3	13	0.4
	Columbus	3	0.1	2	0.1	3	0.1
	Craven	8	0.3	7	0.2	6	0.2
	Cumberland	17	0.6	15	0.5	12	0.4
	Currituck	3	0.1			3	0.1
	Dare	4	0.1	3	0.1	3	0.1
	Duplin			1	0.0	1	0.0
	Edgecombe	2	0.1	1	0.0		
	Gates	1	0.0				
	Greene			2	0.1		
	Halifax	1	0.0				
	Harnett	3	0.1	5	0.2	6	0.2
	Hoke	3	0.1	3	0.1	2	0.1
	Hyde	1	0.0	1	0.0		
	Johnston	2	0.1	4	0.1	3	0.1
	Jones	1	0.0	1	0.0	1	0.0
	Lenoir			1	0.0	2	0.1
	Martin					1	0.0
	Nash	8	0.3	6	0.2	8	0.3
	New Hanover	37	1.3	40	1.3	42	1.5
	Northampton			1	0.0		
	Onslow	5	0.2	10	0.3	10	0.3
	Pamlico	2	0.1	3	0.1	2	0.1
	Pasquotank	1	0.0	2	0.1	1	0.0
	Pender	2	0.1	1	0.0	2	0.1
	Perquimans			1	0.0	2	0.1
	Pitt	16	0.6	14	0.5	10	0.3
	Robeson	3	0.1	5	0.2	5	0.2
	Sampson					1	0.0
	Scotland	1	0.0	1	0.0	3	0.1
Washington	1	0.0	1	0.0	1	0.0	
Wayne	6	0.2	6	0.2	8	0.3	
Wilson	4	0.1	4	0.1	3	0.1	
Region Total	152	5.3	160	5.4	166	5.7	
Total	2,891	100.0	2,982	100.0	2,892	100.0	

Table 13
Minority Presence: Fall Semesters

		International		Black		Asian		Native American		Hispanic		Other Minority		White		Unknown		All
		N	%	N	%	N	%	N	%	N	%	N	%	N	%	N	%	N
New Freshmen	1996	7	1.5	19	4.2	8	1.8	2	0.4	6	1.3	-	-	413	90.8	-	-	455
	1997	8	1.7	17	3.6	5	1.1	3	0.6	7	1.5	3	0.6	430	90.9	-	-	473
	1998	6	1.3	20	4.2	2	0.4	2	0.4	6	1.3	5	1.0	439	91.5	-	-	480
	1999	7	1.5	7	1.5	8	1.7	3	0.7	7	1.5	3	0.7	418	90.9	7	1.5	460
	2000	8	1.6	15	3.0	5	1.0	1	0.2	5	1.0	7	1.4	457	91.2	3	0.6	501
	2001	5	1.1	18	4.0	8	1.8	3	0.7	7	1.5	5	1.1	404	88.8	5	1.1	455
	2002	3	0.7	11	2.6	5	1.2	2	0.5	5	1.2	9	2.1	389	90.9	4	0.9	428
	2003	9	1.5	18	3.0	8	1.3	3	0.5	8	1.3	6	1.0	544	90.8	3	0.5	599
	2004	4	0.6	19	2.7	6	0.8	2	0.3	13	1.8	16	2.3	635	89.8	12	1.7	707
	2005	3	0.6	11	2.3	10	2.1	1	0.2	9	1.9	11	2.3	419	88.8	8	1.7	472
New Transfers	1996	8	3.1	5	2.0	-	-	-	-	5	2.0	2	0.8	234	92.1	-	-	254
	1997	7	2.3	5	1.6	2	0.6	1	0.3	6	1.9	6	1.9	283	91.3	-	-	310
	1998	5	1.5	6	1.8	3	0.9	2	0.6	6	1.8	1	0.3	298	91.4	5	1.5	326
	1999	2	0.7	7	2.4	3	1.0	1	0.3	8	2.8	1	0.3	258	90.2	6	2.1	286
	2000	5	1.7	5	1.7	4	1.3	3	1.0	2	0.7	5	1.7	278	92.1	-	-	302
	2001	4	1.2	4	1.2	3	0.9	-	-	4	1.2	5	1.5	310	93.1	3	0.9	333
	2002	2	0.5	9	2.4	7	1.8	1	0.3	5	1.3	5	1.3	347	90.8	6	1.6	382
	2003	5	1.6	9	3.0	5	1.6	-	-	8	2.6	8	2.6	266	87.5	3	1.0	304
	2004	4	1.8	4	1.8	2	0.9	-	-	8	3.5	5	2.2	202	89.0	2	0.9	227
	2005	1	0.3	6	2.1	4	1.4	2	0.7	7	2.4	6	2.1	260	90.3	2	0.7	288
All Students	1996	41	1.3	117	3.8	38	1.2	17	0.5	40	1.3	6	0.2	2,833	91.6	-	-	3,092
	1997	42	1.3	108	3.4	32	1.0	14	0.4	42	1.3	14	0.4	2,927	92.1	-	-	3,179
	1998	43	1.4	108	3.4	34	1.1	12	0.4	43	1.4	17	0.5	2,913	91.7	5	0.2	3,175
	1999	38	1.2	98	3.1	33	1.0	13	0.4	42	1.3	21	0.7	2,904	91.8	15	0.5	3,164
	2000	44	1.4	94	2.9	37	1.1	17	0.5	41	1.3	27	0.8	2,955	91.4	19	0.6	3,234
	2001	41	1.3	88	2.7	43	1.3	17	0.5	45	1.4	36	1.1	2,948	90.8	29	0.9	3,247
	2002	31	0.9	69	2.1	48	1.5	17	0.5	45	1.4	42	1.3	3,006	91.3	36	1.1	3,294
	2003	42	1.3	78	2.3	52	1.6	13	0.4	53	1.6	45	1.3	3,027	90.4	38	1.1	3,348
	2004	47	1.3	94	2.7	45	1.3	10	0.3	58	1.7	55	1.6	3,140	90.0	39	1.1	3,488
	2005	41	1.2	76	2.2	51	1.5	9	0.3	55	1.6	56	1.6	3,062	90.1	48	1.4	3,398

International Students are not included in other race/ethnicity categories.

Table 14
Distribution of Student Age by Class
Fall 2005

		Age Group Percent				Age			
		LT 25	25-29	30-39	40-Up	Median	Mean	Min	Max
New Freshmen	472	99.6	0.2	0.0	0.2	18.0	18.0	17	66
Other Freshmen	249	95.6	2.8	0.4	1.2	19.0	19.9	18	47
Sophomores	749	92.8	3.6	1.7	1.9	19.0	20.6	17	64
Juniors	769	79.8	11.3	6.0	2.9	21.0	23.0	19	61
Seniors	885	65.8	17.4	11.0	5.9	23.0	25.4	19	63
Non-Degree	237	29.1	26.6	19.4	24.9	29.0	33.1	17	86
Masters Candidates	29	3.4	13.8	27.6	55.2	43.0	42.2	22	60
Special Graduate	8	37.5	12.5	0.0	50.0	34.0	39.6	23	73
Total	3,398	78.6	10.1	6.2	5.0	21.0	23.1	17	86

Table 15
UNC System Undergraduate Student Demographic Comparisons
Fall 2004

Institution	Percent Full-Time	Mean Age	Pct Home & Contig. Co.	Percent Out-of-State
Appalachian State	86.9	22	14.6	10.2
East Carolina	78.8	22	23.6	14.7
Elizabeth City State	86.4	24	32.5	13.8
Fayetteville State	72.4	25	60.1	10.1
NC A & T	86.2	22	27.5	23.2
NC Central	72.0	25	43.9	10.8
NC School of the Arts	90.9	21	19.8	52.0
NC State	76.3	22	37.3	8.3
UNC Asheville	82.1	23	43.7	14.5
UNC Chapel Hill	82.7	21	13.0	18.3
UNC Charlotte	69.4	23	51.9	10.6
UNC Greensboro	72.5	23	45.7	7.9
UNC Pembroke	68.8	26	62.0	4.1
UNC Wilmington	85.6	22	24.8	13.5
Western Carolina	75.2	23	19.0	9.6
Winston-Salem	85.8	24	38.8	8.9
UNC Total	78.4	22	32.6	12.3

Source: *Statistical Abstract of Higher Education in North Carolina*

Table 16
Residence Halls and Number of Students Housed
Fall 2005

Residence Hall	Men	Women	Total
Ashe Hall	0	24	24
Gardner Hall	0	20	20
Governors Hall	74	97	171
Highrise Hall	107	152	259
Hoey Hall	0	20	20
Mills Hall	134	131	265
Moore Hall	26	0	26
Scott Hall	22	0	22
South Ridge Hall	40	70	110
West Ridge Hall	53	92	145
Total On Campus	456	606	1,062

Table 17
Commuter vs Residence Hall Students
(Undergraduate Degree-seeking Students)

Fall Semester	Total Enrollment	Commuter	Res Hall	Percent Res Hall
1992	2,731	1,914	817	29.9
1993	2,663	1,814	849	31.9
1994	2,731	1,786	945	34.6
1995	2,730	1,782	948	34.7
1996	2,657	1,711	946	35.6
1997	2,746	1,800	946	34.5
1998	2,769	1,806	963	34.8
1999	2,775	1,795	980	35.3
2000	2,818	1,804	1,014	36.0
2001	2,888	1,871	1,017	35.2
2002	2,974	1,991	983	33.1
2003	3,093	1,957	1,136	36.7
2004	3,246	1,969	1,277	39.3
2005	3,141	2,079	1,062	33.8

Table 18
Summer School Headcount Enrollment by Class: 10-Year Trend

	1996	1997	1998	1999	2000	2001	2002	2003	2004	2005
Freshman	39	49	43	44	47	42	37	55	50	43
Sophomore	134	144	130	114	126	110	108	111	139	116
Junior	234	266	275	195	185	200	221	239	222	211
Senior	389	350	345	287	302	300	270	282	322	289
Non-degree	53	67	85	64	68	35	46	36	59	64
Post-Bacc Certif	22	16	10	10	9	6	4	5	7	5
Post-Bacc Non-degree	13	7	4	3	5	5	3	1	5	2
Masters Candidate	15	9	12	3	4	10	7	1	6	4
Special Graduate	3	6	1	3	2	4	3	0	3	0
Teacher Certif	16	29	27	28	30	28	25	25	26	22
Visitor	149	129	118	94	78	90	102	79	113	88
Total	1067	1072	1050	845	856	830	826	834	952	844

Table 19
Summer School Headcount, FTE, and SCH Enrollment: 10-Year Trend

Year	Head- count	FTE	SCH
1996	1,067	469	5,611
1997	1,072	444	5,364
1998	1,050	427	5,002
1999	845	339	3,990
2000	856	328	3,827
2001	830	327	3,825
2002	826	331	3,949
2003	834	344	4,165
2004	952	407	4,895
2005	844	346	5,200

Table 20
Distance Education Enrollments by Site

Site	2001-2002		2002-2003		2003-2004		2004-2005	
	Headct	SCH	Headct	SCH	Headct	SCH	Headct	SCH
AB Tech	8	32	4	16	14	44	1	4
Asheville School	47	101	53	139	46	111	84	188
Aston Park Center	19	35						
Avery-Mitchell Prison					67	201		
Buncombe County, Other	26	50	131	249	90	175	80	148
Western Correctional Center, Morganton	61	168	129	388	97	275	203	626
AY Total	161	386	317	792	314	806	368	966

Table 21
Distance Education SCH by Funding Category

		2000-2001	2001-2002	2002-2003	2003-2004	2004-2005	2005-06	2006-07
Category 1	Actual	325	243	567	588	789		
	Fundable	216	174	314	267	313		
	Budgeted	205	400	400	288	288	250	250
	Difference	11	-226	-86	-21	25		
Category 2	Actual	108	30	138	107	85		
	Fundable	0	0	90	63	31		
	Budgeted	187	72	72	164	164	70	70
	Difference	-187	-72	18	-101	-133		
Category 3	Actual	33	113	87	111	96		
	Fundable	33	44	0	0	0		
	Budgeted	111	188	188	0	0	0	0
	Difference	-78	-144	-188	0	0		
Total	Actual	466	386	792	806	970	0	0
	Fundable	249	218	404	330	344	0	0
	Budgeted	503	660	660	452	452	320	320
	Difference	-254	-442	-256	-122	-108	-320	-320

Notes: Fundable SCH does not include SCH generated through contractual relationships with other institutions.
(e.g. Morganton Correctional Center)

Data are as of End of Term.

Table 22
Retention of New Fall Entering *Full-time* Freshmen
1995-2004

	Cohort		Years After Entry					
	Year	N	1	2	3	4	5	6
Retention Rate	1995	392	77.0	62.2	56.9	25.0	6.1	2.6
	1996	450	80.7	62.7	57.3	25.1	8.4	4.2
	1997	470	77.2	60.4	56.6	25.1	7.0	2.8
	1998	474	78.1	61.8	59.1	31.9	6.8	3.0
	1999	456	77.0	64.7	59.2	29.8	6.1	2.9
	2000	495	80.2	65.1	60.0	26.9	7.5	
	2001	446	78.0	66.4	61.4	24.4		
	2002	423	77.8	68.3	62.4			
	2003	593	79.8	68.0				
	2004	698	76.1					
Graduation Rate	1995	392	0.0	0.0	0.8	31.4	50.0	53.8
	1996	450	0.0	0.0	0.4	30.9	47.3	50.9
	1997	470	0.0	0.0	0.2	29.1	47.7	51.3
	1998	474	0.0	0.0	0.4	25.5	48.7	51.9
	1999	456	0.0	0.0	0.4	28.1	50.9	53.5
	2000	495	0.0	0.0	0.8	30.9	49.7	
	2001	446	0.0	0.0	0.2	33.0		
	2002	423	0.0	0.0	0.5			
	2003	593	0.0	0.0				
	2004	698	0.0					
Persistence Rate	1995	392	77.0	62.2	57.7	56.4	56.1	56.4
	1996	450	80.7	62.7	57.8	55.8	55.6	55.1
	1997	470	77.2	60.4	56.8	54.0	54.5	54.0
	1998	474	78.1	61.8	59.5	57.4	55.5	54.9
	1999	456	77.0	64.7	59.6	57.9	56.8	56.4
	2000	495	80.2	65.1	60.8	57.8	57.2	
	2001	446	78.0	66.4	61.7	57.4		
	2002	423	77.8	68.3	62.9			
	2003	593	79.8	68.0				
	2004	698	76.1					

Table 23
Retention of New Fall Entering Transfers
1995-2004

	Cohort		Years After Entry					
	Year	N	1	2	3	4	5	6
Retention Rate	1995	350	64.9	46.9	20.9	7.7	2.6	1.4
	1996	254	68.5	47.2	22.0	8.3	5.9	4.3
	1997	310	72.9	54.8	26.8	12.6	6.8	3.9
	1998	326	68.4	45.7	20.9	9.5	4.6	2.1
	1999	286	67.5	50.3	25.9	10.1	5.9	1.7
	2000	302	66.9	54.0	25.5	11.9	2.6	
	2001	333	71.8	55.6	21.6	10.5		
	2002	382	68.6	52.9	26.4			
	2003	304	70.7	52.6				
	2004	227	72.7					
Graduation Rate	1995	350	0.6	10.0	31.4	44.0	48.3	49.7
	1996	254	0.4	11.4	31.1	41.7	44.9	46.9
	1997	310	0.6	10.6	34.5	48.4	55.2	57.1
	1998	326	0.3	12.0	31.6	42.3	46.6	48.8
	1999	286	0.0	8.7	30.4	43.4	49.7	52.1
	2000	302	0.3	8.3	32.8	46.4	53.3	
	2001	333	0.0	10.5	39.9	50.2		
	2002	382	0.0	7.6	29.3			
	2003	304	0.3	9.5				
	2004	227	0.0					
Persistence Rate	1995	350	65.4	56.9	52.3	51.7	50.9	51.1
	1996	254	68.9	58.7	53.1	50.0	50.8	51.2
	1997	310	73.5	65.5	61.0	61.0	61.9	61.0
	1998	326	68.7	57.7	52.5	51.8	51.2	50.9
	1999	286	67.5	59.1	55.9	53.5	55.2	53.8
	2000	302	67.2	62.3	58.3	58.3	56.0	
	2001	333	71.8	66.1	61.6	60.7		
	2002	382	68.6	60.5	55.8			
	2003	304	71.1	62.2				
	2004	227	72.7					

Table 24
Academic Program Inventory
Fall 2005

Discipline Division, CIP Code, Discipline Specialty, Degree Abbreviation, and Degree Program Title	Discipline Division, CIP Code, Discipline Specialty, Degree Abbreviation, and Degree Program Title
Natural Resources and Conservation	
03.0103 <i>Environmental Studies</i> BS Environmental Science/Studies	
Women's Studies	
05.0207 <i>Women's Studies</i> BA Women's Studies	
Communication, Journalism, and Related Programs	
09.0102 <i>Mass Communication/Media Studies</i> BA Journalism and Mass Communication	
Computer & Information Sciences & Support Services	
11.0701 <i>Computer Science</i> BS Computer Science	
11.0801 <i>Web Page, Digital/Multimedia & Information Resources Design</i> BA Multimedia Arts and Sciences	
Engineering	
14.0101 <i>Engineering, General</i> BS Engineering (Joint w/UNCA & NCSU)	
Foreign Languages, Literatures and Linguistics	
16.0501 <i>German Language and Literature</i> BA German BA German with Teacher Licensure	
16.0901 <i>French Language and Literature</i> BA French BA French with Teacher Licensure	
16.0905 <i>Spanish Language and Literature</i> BA Spanish BA Spanish with Teacher Licensure	
16.1200 <i>Classics & Classical Languages, Literatures & Linguistics, Gen</i> BA Classics BA Classics with Teacher Licensure	
English Language and Literatures/Letters	
23.0101 <i>English Language and Literature, General</i> BA English BA English with Teacher Licensure	
Liberal Arts & Sciences, General Studies & Humanities	
24.0101 <i>Liberal Arts and Sciences/Liberal Studies</i> BA Interdisciplinary Studies MA Liberal Studies	
Biological and Biomedical Sciences	
26.0101 <i>Biology/Biological Sciences, General</i> BS Biology BS Biology with Teacher Licensure	
Mathematics and Statistics	
27.0101 <i>Mathematics, General</i> BA Mathematics BA Mathematics with Teacher Licensure	
Philosophy and Religious Studies	
38.0101 <i>Philosophy</i> BA Philosophy	
Physical Sciences	
40.0401 <i>Atmospheric Sciences and Meteorology, General</i> BS Atmospheric Science and Meteorology	
40.0501 <i>Chemistry, General</i> BA Chemistry BA Chemistry with Teacher Licensure BS Chemistry BS Chemistry with Teacher Licensure	
40.0801 <i>Physics, General</i> BS Physics BS Physics with Teacher Licensure	
Psychology	
42.0101 <i>Psychology, General</i> BA Psychology	
Social Sciences	
45.0601 <i>Economics, General</i> BA Economics BA Economics with Teacher Licensure in Social Studies	
45.1001 <i>Political Science and Government, General</i> BA Political Science BA Political Science w/ Teacher Licensure in Social Studies	
45.1101 <i>Sociology</i> BA Sociology BA Sociology with Teacher Licensure in Social Studies	
Visual and Performing Arts	
50.0501 <i>Drama and Dramatics/Theater Arts, General</i> BA Drama BA Drama with Teacher Licensure	
50.0701 <i>Art/Art Studies, General</i> BA Art BA Art with Teacher Licensure	
50.0702 <i>Fine/Studio Arts, General</i> BFA Art	
50.0901 <i>Music, General</i> BA Music	
50.0999 <i>Music, Other</i> BS Music Technology	
Health Professions & Related Sciences	
51.2207 <i>Public Health Education and Promotion</i> BS Health and Wellness Promotion	
Business, Management, Marketing and Related Support Services	
52.0201 <i>Business Administration and Management, General</i> BS Management	
52.0205 <i>Operations Management and Supervision</i> BS Industrial and Engineering Management	
52.0301 <i>Accounting</i> BS Accounting	
History	
54.0101 <i>History, General</i> BA History BA History with Teacher Licensure in Social Studies	

Table 25
Enrollment by Major
Degree Seeking Undergraduates - Spring Semester

Major	2001	2002	2003	2004	2005	5-Year % Change
Accounting	55	57	71	74	68	23.6
Art	72	64	75	87	112	55.6
Atmospheric Sciences	34	38	46	35	39	14.7
Biology	96	82	82	96	101	5.2
Chemistry	43	38	34	33	43	0.0
Classics	6	12	16	24	23	283.3
Computer Science	88	89	78	55	60	-31.8
Drama	28	24	28	29	25	-10.7
Economics	57	50	45	36	36	-36.8
Education	66	48	62	67	65	-1.5
Environmental Studies	128	139	136	128	108	-15.6
French	10	12	11	10	18	80.0
German	8	5	8	15	11	37.5
History	72	70	99	104	82	13.9
Industrial Engineering Mgmt	11	7	5	10	10	-9.1
Interdisciplinary Studies	0	31	37	52	49	-
Literature	110	92	105	122	142	29.1
Management	158	149	157	147	145	-8.2
Mass Communication	42	43	74	96	87	107.1
Mathematics	37	43	48	59	69	86.5
Mechatronics	26	30	28	24	28	7.7
Multimedia Arts & Sciences	65	86	81	61	59	-9.2
Music	29	16	17	23	20	-31.0
Music Technology	17	17	26	20	24	41.2
Philosophy	26	25	22	30	30	15.4
Physics	11	10	10	13	15	36.4
Political Science	51	55	49	54	58	13.7
Psychology	155	165	161	179	183	18.1
Sociology	69	72	55	54	56	-18.8
Spanish	32	37	38	48	43	34.4

NOTE: Degree-seeking students *formally* admitted to the teacher licensure program are double counted in "Education" and their primary major.
Students with double majors are counted in each major.

Table 26
Degrees Conferred by Academic Area and Major

Academic Area	Major	2000-01		2001-02		2002-03		2003-04		2004-05	
		N	%	N	%	N	%	N	%	N	%
Social Sciences	Accounting	18	3.5	19	3.7	15	2.6	18	3.0	13	2.3
	Economics	14	2.8	24	4.7	16	2.8	18	3.0	12	2.1
	Indus Engr Mgmt	4	0.8	5	1.0	1	0.2	3	0.5	4	0.7
	Management	63	12.4	61	12.0	50	8.7	56	9.4	63	11.0
	Mass Comm	23	4.5	12	2.4	25	4.3	47	7.9	42	7.3
	Political Sci	10	2.0	22	4.3	26	4.5	21	3.5	13	2.3
	Psychology	87	17.1	73	14.4	85	14.8	78	13.1	76	13.2
	Sociology	29	5.7	37	7.3	32	5.6	39	6.5	19	3.3
	Total in Area	248	48.7	253	49.8	250	43.4	280	47.0	242	42.1
Natural Sciences	Atmospheric Sci	4	0.8	13	2.6	20	3.5	9	1.5	18	3.1
	Biology	32	6.3	20	3.9	27	4.7	23	3.9	33	5.7
	Chemistry	10	2.0	10	2.0	17	3.0	6	1.0	5	0.9
	Computer Sci	22	4.3	24	4.7	33	5.7	18	3.0	26	4.5
	Environ Studies	40	7.9	37	7.3	48	8.3	51	8.6	39	6.8
	Mathematics	11	2.2	11	2.2	21	3.6	9	1.5	20	3.5
	Multimedia	21	4.1	11	2.2	33	5.7	33	5.5	26	4.5
	Physics	-	-	6	1.2	3	0.5	3	0.5	4	0.7
	Total in Area	140	27.5	132	26.0	202	35.1	152	25.5	171	29.7
Humanities	Art	21	4.1	28	5.5	22	3.8	21	3.5	20	3.5
	Classics	5	1.0	2	0.4	2	0.3	5	0.8	4	0.7
	Drama	9	1.8	12	2.4	8	1.4	11	1.8	14	2.4
	French	3	0.6	2	0.4	5	0.9	5	0.8	2	0.3
	German	4	0.8	1	0.2	1	0.2	3	0.5	4	0.7
	History	32	6.3	23	4.5	20	3.5	45	7.6	27	4.7
	Literature	38	7.5	36	7.1	32	5.6	27	4.5	49	8.5
	Music	7	1.4	11	2.2	3	0.5	8	1.3	9	1.6
	Music Technology	3	0.6	2	0.4	16	2.8	6	1.0	10	1.7
	Philosophy	7	1.4	5	1.0	10	1.7	5	0.8	8	1.4
	Spanish	8	1.6	16	3.1	12	2.1	29	4.9	17	3.0
Total in Area	137	26.9	138	27.2	131	22.7	165	27.7	164	28.5	
Interdisciplinary	Interdisp Studies	-	-	2	0.4	17	3.0	21	3.5	21	3.7
	Total in Area	-	-	2	0.4	17	3.0	21	3.5	21	3.7
Graduate	Liberal Arts (MLA)	11	2.2	7	1.4	5	0.9	7	1.2	1	0.2
	Total in Area	11	2.2	7	1.4	5	0.9	7	1.2	1	0.2
UNCA	UNCA	509	100.0	508	100.0	576	100.0	596	100.0	575	100.0
	Total in Area	509	100.0	508	100.0	576	100.0	596	100.0	575	100.0

Table 27
Average Undergraduate Class Size
(Fall Semesters)

	2001	2002	2003	2004	2005
Africana Studies	9.0	7.0	-	-	15.0
Art	14.2	15.2	13.9	14.8	15.5
Arts 310	20.8	21.3	22.8	20.9	22.2
Atmospheric Sciences	21.3	16.9	20.8	20.4	19.6
Biology	22.9	27.1	30.5	30.7	22.9
Chemistry	20.0	21.3	20.7	22.0	19.1
Classics	12.9	11.2	11.4	13.9	12.0
Computer Science	25.6	18.6	18.8	16.0	14.2
Drama	12.4	15.2	13.1	14.5	15.6
Economics	21.7	22.1	20.0	18.0	19.8
Education	13.7	15.5	13.3	16.9	18.6
Engineering	14.5	16.1	14.6	11.7	15.6
Environmental Studies	25.4	27.3	25.9	22.6	23.9
First-Year Experience	13.3	12.3	16.9	-	-
Foreign Languages	18.8	18.6	21.5	18.7	17.2
Health & Fitness	18.3	21.5	21.1	19.5	16.1
Health & Wellness	-	-	-	-	19.2
History	20.1	25.5	21.4	20.1	21.3
Honors Program	11.2	11.4	15.8	12.6	12.7
Humanities	18.2	20.3	20.1	20.1	19.7
Interdisciplinary Studies	11.5	12.5	15.7	17.8	18.3
International Studies	-	-	19.0	-	15.0
Liberal Studies	-	-	-	-	14.7
Literature	18.1	19.2	21.1	19.9	19.8
Management	18.5	20.0	17.9	16.9	18.2
Mass Communication	13.1	18.1	19.6	19.7	20.0
Mathematics	23.2	22.3	24.9	23.8	24.2
Multimedia Arts and Sciences	14.4	13.1	11.2	11.2	12.4
Music	13.3	15.3	11.8	14.7	13.0
Philosophy	17.2	15.5	18.3	21.0	20.2
Physics	37.1	37.5	32.0	42.1	29.5
Political Science	18.1	16.5	21.4	19.4	19.1
Psychology	25.1	26.8	25.8	24.7	24.7
Sociology	20.9	21.1	23.8	22.3	22.3
Women's Studies	15.0	15.0	16.0	17.5	18.0
Total University	18.8	19.8	19.8	19.6	19.2

Table 28
Grade Distribution by Course Level and Academic Year

Level	Acad Year Ending	N Grades	Weighted GPA	Grade											
				A %	A- %	B+ %	B %	B- %	C+ %	C %	C- %	D+ %	D %	F %	
100	1996	8,106	2.67	32.7			33.1				20.5		5.6	8.2	
	1997	8,210	2.68	31.2			34.6				21.1		6.0	7.1	
	1998	8,543	2.70	32.4			34.1				20.9		5.4	7.3	
	1999	8,925	2.77	34.0			35.1				19.2		5.3	6.4	
	2000	8,977	2.79	34.7			35.5				18.1		4.5	7.2	
	2001	9,149	2.77	34.4			34.8				18.9		5.3	6.6	
	2002	9,241	2.86	38.7			33.3				17.5		4.7	5.8	
	2003	9,328	2.81	30.7	7.4	6.4	22.0	4.5		3.7	11.7	1.7	0.4	4.0	7.5
	2004	10,254	2.82	27.0	9.4	7.6	21.3	6.2		4.3	10.8	2.2	0.7	4.0	6.4
2005	10,850	2.85	27.4	10.1	8.4	19.8	6.6		4.1	10.2	2.8	0.7	3.6	6.2	
200	1996	5,025	2.76	29.9			37.0				21.3		5.4	6.4	
	1997	4,916	2.78	30.6			36.4				20.9		6.1	6.1	
	1998	4,604	2.77	31.1			35.5				21.1		5.6	6.8	
	1999	4,356	2.81	32.0			37.6				18.4		5.7	6.3	
	2000	4,218	2.85	32.9			37.6				19.2		4.6	5.6	
	2001	4,330	2.84	33.5			36.5				18.8		5.1	6.1	
	2002	4,303	2.97	38.2			36.5				16.6		4.3	4.3	
	2003	4,636	2.95	30.1	9.2	7.7	22.3	4.7		3.6	11.3	1.8	0.3	3.6	5.3
	2004	4,618	2.96	29.8	11.0	8.6	21.0	5.0		3.7	9.4	1.9	0.5	3.6	5.6
2005	4,650	2.99	29.6	11.3	8.8	21.3	5.2		3.9	9.3	2.3	0.5	3.2	4.6	
300	1996	6,139	3.05	41.7			35.9				15.3		3.0	4.1	
	1997	6,108	3.05	40.5			37.0				15.7		3.2	3.6	
	1998	6,057	3.01	39.5			36.5				16.6		2.9	4.3	
	1999	6,795	3.05	42.6			35.6				14.7		2.8	4.3	
	2000	7,108	3.10	43.2			36.5				14.2		2.3	3.9	
	2001	7,007	3.11	42.7			37.5				13.9		2.3	3.6	
	2002	7,618	3.17	47.0			35.0				12.3		2.0	3.7	
	2003	7,909	3.15	37.5	9.6	8.0	22.0	4.9		2.6	8.3	1.5	0.3	2.0	3.4
	2004	7,973	3.21	39.5	10.5	7.9	21.7	4.0		2.6	7.2	1.4	0.3	1.8	3.2
2005	8,156	3.23	39.4	11.5	8.4	20.3	4.9		2.6	6.7	1.0	0.3	1.8	3.1	
400	1996	2,045	3.17	42.1			39.5				14.0		1.9	2.5	
	1997	2,150	3.18	44.3			36.8				14.2		2.0	2.6	
	1998	2,153	3.16	45.8			34.7				14.2		2.2	3.1	
	1999	2,185	3.21	47.0			35.5				12.8		1.4	3.2	
	2000	2,170	3.27	50.1			33.5				12.6		1.6	2.2	
	2001	2,062	3.28	51.8			32.7				11.4		1.3	2.8	
	2002	2,295	3.28	51.2			33.3				11.2		2.0	2.2	
	2003	2,549	3.27	41.9	11.5	8.2	19.4	4.1		2.2	6.9	1.1	0.3	1.0	3.4
	2004	2,759	3.32	43.9	10.8	8.4	19.0	4.7		2.3	6.2	1.1	0.1	1.2	2.3
2005	2,749	3.34	45.7	9.9	8.4	17.6	4.4		3.0	6.6	0.8	0.0	1.5	2.1	
500+	1996	109	3.55	67.0			26.6				3.7			2.8	
	1997	110	3.40	56.4			34.5				5.5			3.6	
	1998	92	3.49	65.2			27.2				3.3			4.3	
	1999	93	3.58	64.5			31.2				3.2			1.1	
	2000	86	3.47	58.1			36.0				2.3		1.2	2.3	
	2001	70	3.54	65.7			27.1				4.3		1.4	1.4	
	2002	73	3.55	65.8			30.1				1.4			2.7	
	2003	72	3.42	54.2	6.9	12.5	15.3	1.4		2.8	1.4			5.6	
	2004	83	3.52	56.6	14.5	9.6	9.6	3.6		1.2				4.8	
2005	97	3.50	54.6	17.5	9.3	10.3	1.0			2.1			5.2		
All	1996	21,424	2.85	35.7			35.4				18.5		4.4	6.1	
	1997	21,494	2.86	35.1			35.9				18.8		4.8	5.4	
	1998	21,449	2.85	35.6			35.1				19.0		4.4	5.9	
	1999	22,354	2.91	37.6			35.8				17.0		4.2	5.4	
	2000	22,559	2.94	38.6			36.0				16.5		3.5	5.3	
	2001	22,618	2.94	38.5			35.8				16.6		3.9	5.2	
	2002	23,530	3.02	42.6			34.4				15.0		3.5	4.5	
	2003	24,494	2.99	34.0	8.9	7.4	21.8	4.6		3.2	10.0	1.6	0.4	2.9	5.3
	2004	25,687	3.02	33.3	10.2	8.0	21.1	5.1		3.4	8.9	1.8	0.4	2.9	4.8
2005	26,502	3.04	33.5	10.7	8.5	20.0	5.6		3.5	8.6	1.9	0.5	2.7	4.5	

Figure 5
Weighted GPA by Academic Year and Course Level

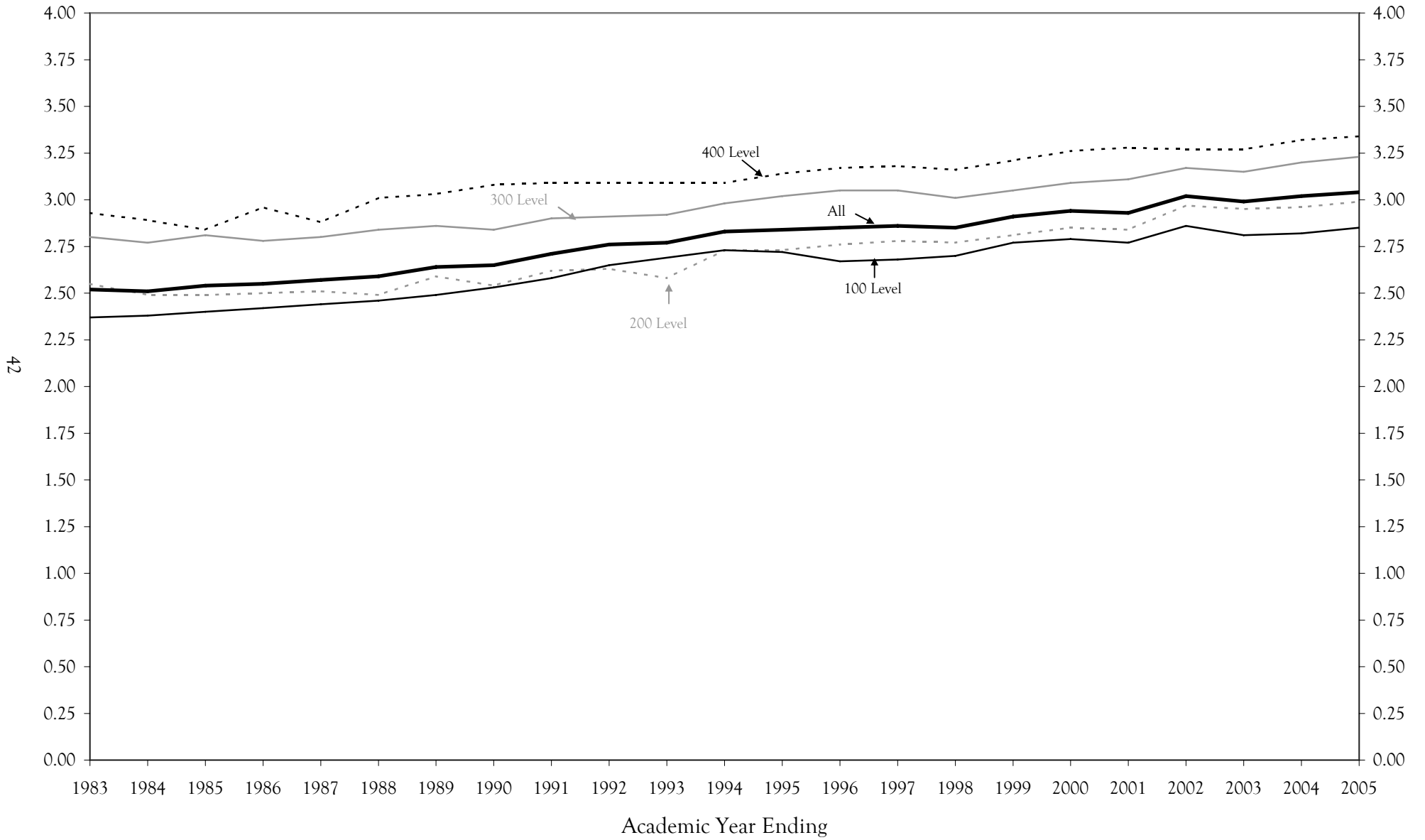


Table 29
Intercollegiate Athletics
Fall 2005

Teams	Men	Women	Last Champ.	Last Record		
				W	L	T
Baseball	31	-		11	42	
Basketball - Men	15	-	2003	11	17	
Basketball - Women	-	13	1984	18	12	
Soccer - Men	21	-	2001	7	10	2
Soccer - Women	-	22	2004	11	6	2
Tennis - Men	4	-	1986	15	5	0
Tennis - Women	-	6	1989	11	8	0
Volleyball	-	12	2002	19	17	
Track - Men	22	-		7th in Big South		
Track - Women	-	20		5th in Big South		
X-Country - Men	12	-		5th in Big South		
X-Country - Women	-	16		4th in Big South		

Athletic Facilities	Seats
Justice Center Gym (Basketball)	1,100
Greenwood Field (Soccer)	1,000
Greenwood Field (Baseball)	1,000

National Collegiate Athletic Association Information

NCAA Division I
Big South Conference
Nickname: Bulldogs
Colors: Royal Blue and White

Big South Conference Members

1. UNC Asheville
2. Charleston Southern University
3. Coastal Carolina University
4. Winthrop University
5. Radford University
6. Liberty University
7. Virginia Military Institute
8. High Point University
9. Birmingham Southern

Source: UNCA Athletics

Table 30

Asheville Graduate Center
Participating Universities and Program Offerings

North Carolina State University

- Master of Engineering
- Master of Computer Science
- Master of Civil Engineering
- Master of Science in Mechanical Engineering
- Master of Science in Aerospace Engineering

University of North Carolina at Chapel Hill

- Master of Social Work

University of North Carolina at Greensboro

- Master of Library and Information Studies

Western Carolina University

- Master of Accountancy
- Master of Arts in Education
 - Comprehensive Education (7 concentrations)
 - Educational Administration - Two Year College
 - Educational Supervision
 - School Counseling
 - Two-Year College Teaching
- Master of Arts in Teaching
 - Comprehensive Education (5 concentrations)
- Master of Education
 - College of Student Personnel
- Master of Business Administration
- Master of Entrepreneurship
- Master of Health Sciences
- Master of Public Affairs
- Master of School Administration
- Master of Science
 - Community Counseling
 - Human Resources
 - Technology
- Master of Science in Nursing
- Education Specialist
 - Educational Leadership
- Doctor of Education
 - Educational Leadership

Table 31

Asheville Graduate Center Fall Headcount Enrollments

School	1996	1997	1998	1999	2000	2001	2002	2003	2004	2005
NCSU	43	28	42	28	28	37	10	12	11	8
UNC CH	57	55	41	24	19	23	20	21	18	18
UNC G	21	22	31	29	31	31	30	37	20	7
WCU	454	492	556	569	581	706	728	815	771	593
Total	575	597	670	650	659	797	788	885	820	626

Table 32
Summer Conferences

	1997	1998	1999	2000	2001	2002	2003	2004	2005
No. of Conferences	22	21	32	29	28	30	34	27	31
No. of Participants	2,374	3,935	2,532	3,083	2,842	2,406	3,796	3,010	2,945
No. of Dorm Beds	7,342	10,525	6,432	7,938	7,727	8,369	11,641	10,839	9,264

Source: *Conferences & Institutes*

Table 33
Continuing Education Enrollments

	1997	1998	1999	2000	2001	2002	2003	2004	2005
Extension and Distance Education	338	417	680	606	469	341	487	545	267
Super Saturday	1,510	1,181	1,194	1,165	1,199	1,385	1,525	1,399	1,211
NC Center for Creative Retirement	1,457	N/A	N/A	1,965	2,039	2,179	1,984	2,399	2,225

Source: *Extension & Distance Education, Center for Creative Retirement*

Table 34

Student Financial Aid by Source
Three-Year Trend

	2002-2003		2003-2004		2004-2005	
	Awards	Amount	Awards	Amount	Awards	Amount
Federal Funds						
Bureau of Indian Affairs Sch	1	3,754				
College Work Study (FWS)	121	147,402	102	125,349	79	149,554
FDLP - PLUS	148	860,607	185	1,156,441	191	1,286,566
FDLP - Subsidized Stafford	962	3,188,336	1,077	3,512,894	1,139	3,988,964
FDLP - Unsubsidized Stafford	778	2,644,414	777	2,610,632	786	2,723,508
JPTA					6	22,337
National Merit Scholarship	9	12,529	3	1,750	5	12,500
Other Federal Scholarship/Grant	17	24,468	9	22,368	13	21,323
Pell Grant	775	1,973,070	854	2,121,224	815	2,142,183
Perkins Loan	204	640,022	79	232,365	74	229,292
Student Incentive Grant	54	33,773	52	33,250	47	31,379
Supplemental Grant (SEOG)	115	53,279	130	59,511	128	65,786
Veteran Educational Benefits	63	129,199	57	154,407	67	166,932
Sub-total	3,247	9,710,853	3,325	10,030,190	3,350	10,840,325
State Funds						
Incentive Scholars Program			1	3,200	1	3,200
NC Div of Vocational Rehabilitation	59	132,777	29	45,797	30	71,622
NC Escheats Fund	68	21,625	60	19,100	51	16,800
NC Sch for Health, Science and Math					6	10,188
NC Teaching Fellows Program	56	331,100	47	284,027	53	315,522
Nurse Scholars Program	1	5,000	3	8,750	3	15,000
Other NC Scholarship/Grant	489	226,981	476	218,325	485	240,250
Prospective Teacher Sch'ship Loan	4	10,000	8	17,500	10	22,500
UNC Campus Scholarship Program	12	23,720	10	22,360	2	5,121
UNCIG (NCEAA incentive grant)	256	340,964	473	516,453	636	901,603
Sub-total	945	1,092,167	1,107	1,135,512	1,277	1,601,806
Other Funds						
Athletic Grant-In-Aid	144	767,068	141	824,347	149	844,175
Campus Job (excluding FWS)	619	816,176	688	178,311	823	1,138,929
Foundation-awarded Grant/Sch'ship	410	445,029	322	389,365	339	445,393
Institutional Grant/Sch (needbase)	29	54,626	20	35,980	46	72,686
Institutional Grant/Sch (non-need)	972	939,381	1,045	949,426	1,279	1,084,558
Institutional Loan (non-need)	28	149,461	41	278,414	58	425,961
Tuition Waivers (not remissions)	19	15,846	17	14,178	17	14,428
Sub-total	2,221	3,187,586	2,274	2,670,021	2,711	4,026,129
Total	6,413	13,990,606	6,706	13,835,723	7,338	16,468,260

* Not all dollars under Other Funds are awarded by the Office of Financial Aid.

Table 35

Students Receiving Financial Aid

Fall	N	Financial Aid			Percent of Students Receiving				Average	Avg Pct of	
		Apps	Offers	Awards	Loans	Grants	Scholarships	Aid Total	Award	Need Met	
2003	New Freshmen	599	422	369	369	41.9	48.2	8.7	61.6	5,842	76.3
	New Transfers	304	193	178	178	46.1	43.4	3.0	58.6	7,492	74.4
	New Non-Degree	85	16	10	10	9.4	2.4	0.0	11.8	3,815	63.0
	New Graduates	8	4	3	3	37.5	0.0	0.0	37.5	4,833	69.8
	Returning	100	41	28	29	20.0	18.0	4.0	29.0	4,032	73.7
	Continuing	2,252	1,355	1,276	1,278	38.7	40.4	9.3	56.7	6,530	81.5
	Total	3,348	2,031	1,864	1,867	38.6	40.4	8.2	55.8	6,409	79.5
2004	New Freshmen	707	507	455	455	42.1	52.3	9.9	64.4	5,773	78.5
	New Transfers	227	168	162	162	56.4	53.7	6.2	71.4	7,713	79.7
	New Non-Degree	91	13	8	8	4.4	4.4	1.1	8.8	3,444	60.6
	New Graduates	13	3	2	2	15.4	0.0	0.0	15.4	10,664	100.0
	Returning	110	50	32	33	21.8	16.4	0.0	30.0	3,836	73.6
	Continuing	2,340	1,417	1,318	1,324	38.9	41.7	9.8	56.6	7,260	80.0
	Total	3,488	2,158	1,977	1,984	39.2	42.7	9.0	56.9	6,844	79.5
2005	New Freshmen	472	334	294	294	40.5	46.4	10.2	62.3	5,578	77.7
	New Transfers	288	192	178	182	52.1	46.2	2.8	63.2	7,972	76.1
	New Non-Degree	97	15	11	11	8.2	4.1	1.0	11.3	4,923	53.7
	New Graduates	15	4	1	1	6.7	0.0	0.0	6.7	7,089	100.0
	Returning	138	57	40	41	24.6	20.3	0.7	29.7	6,462	74.5
	Continuing	2,388	1,358	1,286	1,298	39.2	41.0	8.2	54.4	7,569	81.8
	Total	3,398	1,960	1,810	1,827	38.8	40.1	7.4	53.8	7,225	80.2

Note: Institutional Work Study and GI Bill are not included.

2004 data are as of January 1, 2005

Table 36
Intercollegiate Athletics Grants-In-Aid
2004-2005

	Male	Female	Total
Athletic Training Rooms	0	3,400	3,400
Baseball	55,466	0	55,466
Basketball	147,208	184,195	331,403
Cross Country	0	3,300	3,300
Soccer	69,710	77,156	146,866
Tennis	57,448	41,242	98,690
Track	50,006	68,503	118,509
Volleyball	0	85,681	85,681
Total	379,838	463,476	843,314

Table 37
Current Residence of Alumni by US Region, State and Nation

		2005	
		N	%
The South	Alabama	59	0.5
	Arkansas	19	0.2
	Florida	389	3.6
	Georgia	388	3.6
	Kentucky	36	0.3
	Louisiana	23	0.2
	Mississippi	22	0.2
	North Carolina	7,531	70.1
	South Carolina	363	3.4
	Tennessee	246	2.3
	Virginia	255	2.4
	West Virginia	21	0.2
	Region Total	9,352	87.1
Mid-Atlantic	Delaware	14	0.1
	District of Columbia	26	0.2
	Maryland	97	0.9
	New Jersey	50	0.5
	New York	118	1.1
	Pennsylvania	73	0.7
	Region Total	378	3.5
New England	Connecticut	16	0.1
	Maine	13	0.1
	Massachusetts	55	0.5
	New Hampshire	13	0.1
	Rhode Island	5	0.0
	Vermont	7	0.1
Region Total	109	1.0	
Midwest	Illinois	68	0.6
	Indiana	41	0.4
	Iowa	7	0.1
	Kansas	12	0.1
	Michigan	39	0.4
	Minnesota	20	0.2
	Missouri	27	0.3
	Nebraska	3	0.0
	North Dakota	1	0.0
	Ohio	62	0.6
	South Dakota	5	0.0
	Wisconsin	26	0.2
	Region Total	311	2.9
The Southwest	Arizona	36	0.3
	New Mexico	14	0.1
	Oklahoma	11	0.1
	Texas	128	1.2
	Region Total	189	1.8

Table 37
Current Residence of Alumni by US Region, State and Nation

		2005	
		N	%
The West	Alaska	14	0.1
	California	141	1.3
	Colorado	68	0.6
	Hawaii	10	0.1
	Idaho	2	0.0
	Montana	10	0.1
	Nevada	15	0.1
	Oregon	35	0.3
	Utah	7	0.1
	Washington	43	0.4
	Wyoming	5	0.0
	Region Total	350	3.3
Territories	Puerto Rico	1	0.0
	Virgin Islands	4	0.0
	Region Total	5	0.0
International	Australia	4	0.0
	British Virgin Islan	1	0.0
	Canada	1	0.0
	Costa Rica	1	0.0
	Cyprus	1	0.0
	Ecuador	1	0.0
	Egypt	3	0.0
	Honduras	1	0.0
	Japan	8	0.1
	Kenya	1	0.0
	Malaysia	1	0.0
	Morocco	1	0.0
	Netherlands	1	0.0
	New Zealand	3	0.0
	Peru	1	0.0
	Philippines	1	0.0
	Singapore	1	0.0
	Sweden	2	0.0
	The Bahamas	1	0.0
	Turkey	3	0.0
	United Kingdom	3	0.0
	West Germany	2	0.0
	Zambia	2	0.0
Region Total	44	0.4	
Total		10,738	100.0

Table 38
Alumni by North Carolina Region and County

		2005	
		N	%
Western NC	Alleghany	4	0.1
	Ashe	13	0.2
	Avery	13	0.2
	Buncombe	3,320	44.2
	Burke	88	1.2
	Caldwell	43	0.6
	Cherokee	48	0.6
	Clay	18	0.2
	Graham	6	0.1
	Haywood	193	2.6
	Henderson	813	10.8
	Jackson	48	0.6
	Macon	45	0.6
	Madison	117	1.6
	McDowell	146	1.9
	Mitchell	37	0.5
	Polk	76	1.0
	Rutherford	95	1.3
	Surry	17	0.2
	Swain	18	0.2
Transylvania	141	1.9	
Watauga	22	0.3	
Wilkes	21	0.3	
Yancey	64	0.9	
	Region Total	5,406	72.0
Piedmont NC	Alamance	16	0.2
	Alexander	14	0.2
	Anson	5	0.1
	Cabarrus	44	0.6
	Caswell	3	0.0
	Catawba	77	1.0
	Chatham	18	0.2
	Cleveland	53	0.7
	Davidson	31	0.4
	Davie	11	0.1
	Durham	110	1.5
	Forsyth	189	2.5
	Franklin	5	0.1
	Gaston	58	0.8
	Granville	7	0.1
	Guilford	163	2.2
	Iredell	55	0.7
	Lee	7	0.1
	Lincoln	21	0.3
	Mecklenburg	353	4.7
	Montgomery	4	0.1
	Moore	21	0.3
	Orange	98	1.3
	Person	1	0.0
Randolph	12	0.2	
Richmond	5	0.1	

Table 38
Alumni by North Carolina Region and County

		2005	
		N	%
	Rockingham	11	0.1
	Rowan	35	0.5
	Stanly	10	0.1
	Stokes	6	0.1
	Union	83	1.1
	Vance	1	0.0
	Wake	287	3.8
	Yadkin	7	0.1
	Region Total	1,821	24.3
Eastern NC	Beaufort	4	0.1
	Bladen	1	0.0
	Brunswick	13	0.2
	Carteret	10	0.1
	Columbus	2	0.0
	Craven	9	0.1
	Cumberland	20	0.3
	Currituck	4	0.1
	Dare	1	0.0
	Duplin	3	0.0
	Edgecombe	4	0.1
	Greene	1	0.0
	Halifax	3	0.0
	Harnett	64	0.9
	Hoke	1	0.0
	Hyde	1	0.0
	Johnston	7	0.1
	Jones	1	0.0
	Nash	4	0.1
	New Hanover	59	0.8
	Onslow	8	0.1
	Pasquotank	1	0.0
	Pender	4	0.1
	Perquimans	1	0.0
	Pitt	27	0.4
	Robeson	4	0.1
	Sampson	1	0.0
	Scotland	2	0.0
	Tyrrell	1	0.0
	Washington	2	0.0
	Wayne	7	0.1
	Wilson	8	0.1
	Region Total	278	3.7
Total		7,505	100.0

Faculty and Staff

Figure 6
UNCA Organizational Chart

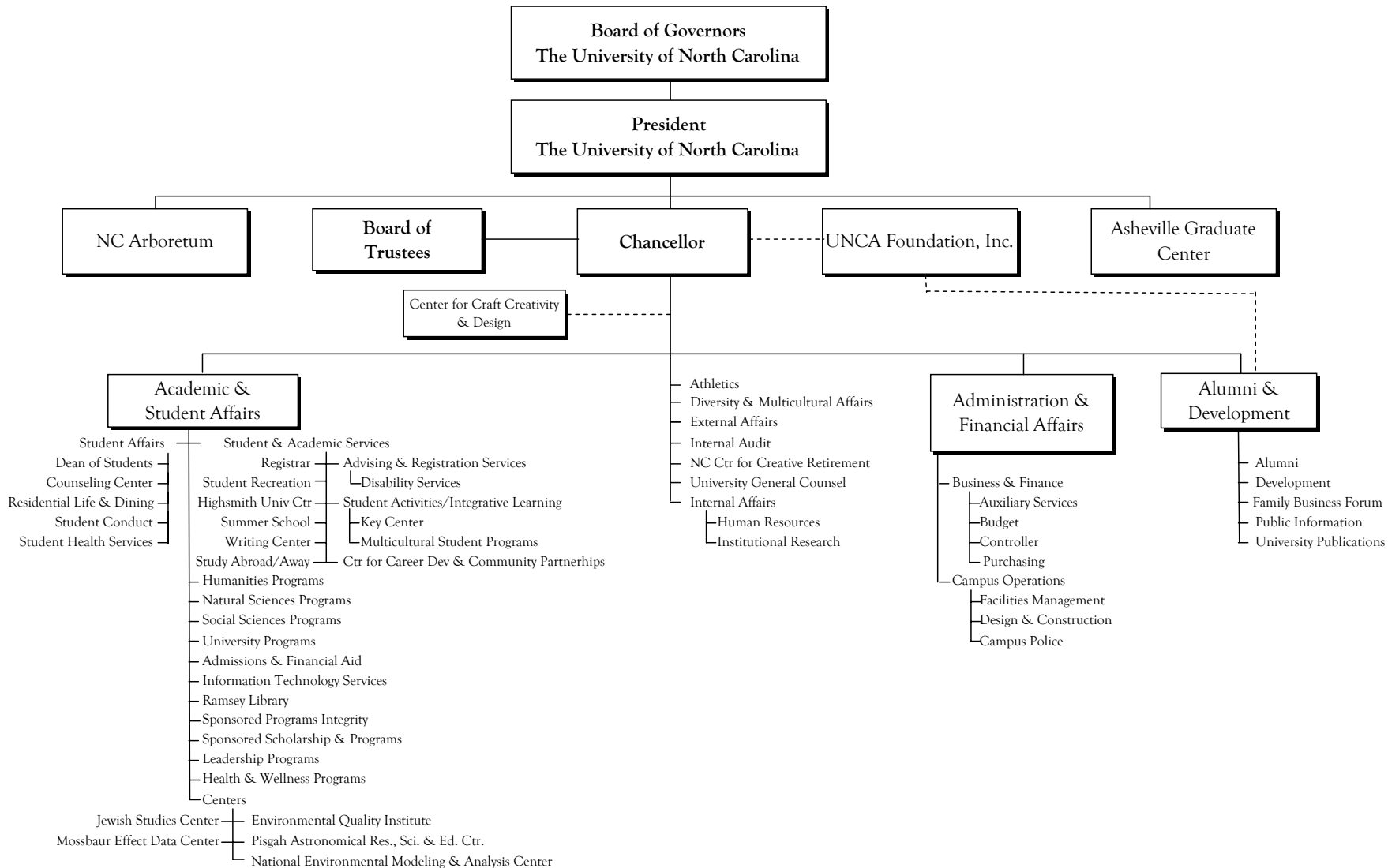
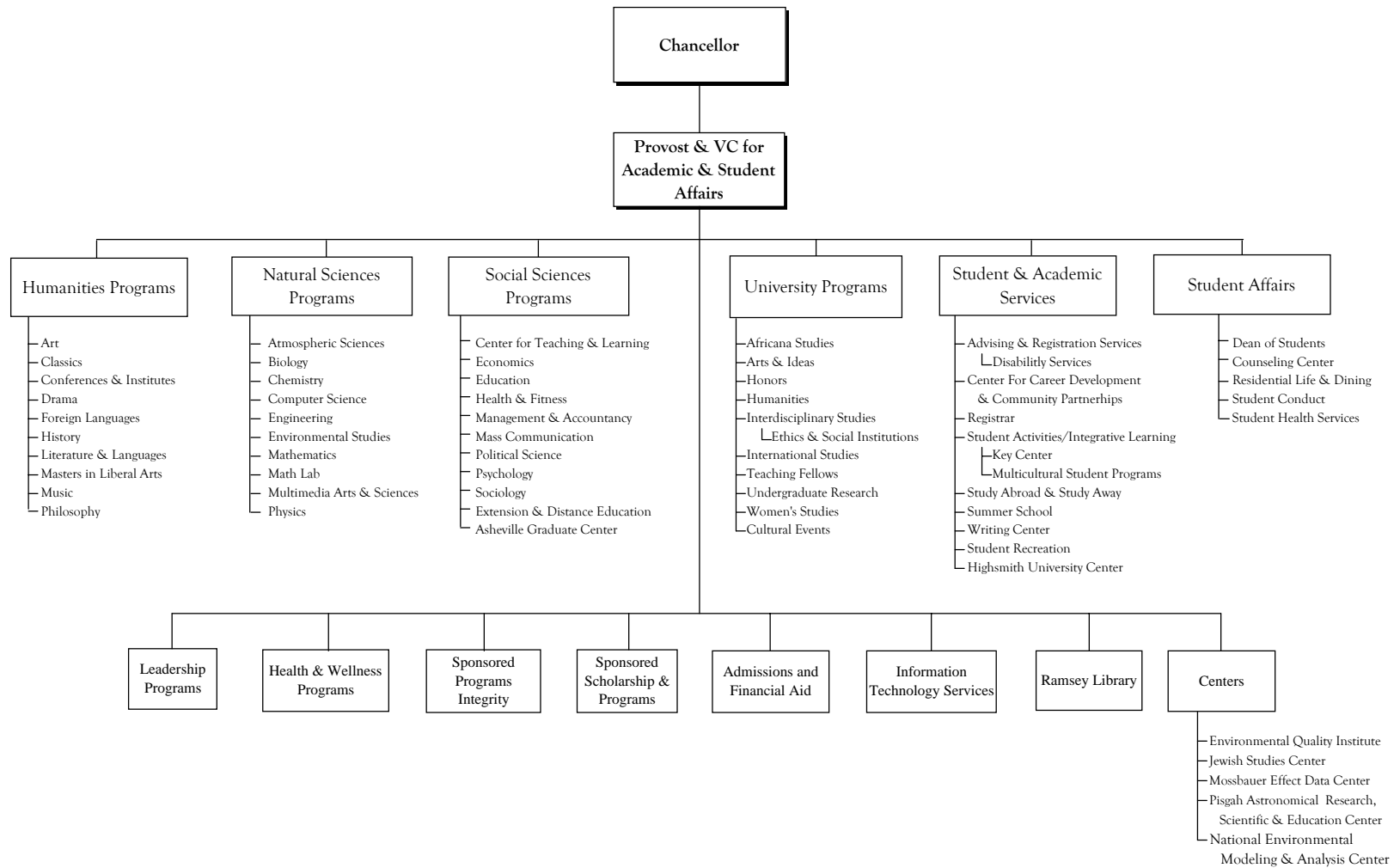


Figure 7
Organizational Chart for Academic & Student Affairs: 2005-06



55

Figure 8
Organizational Chart for Administration, Financial and External Affairs

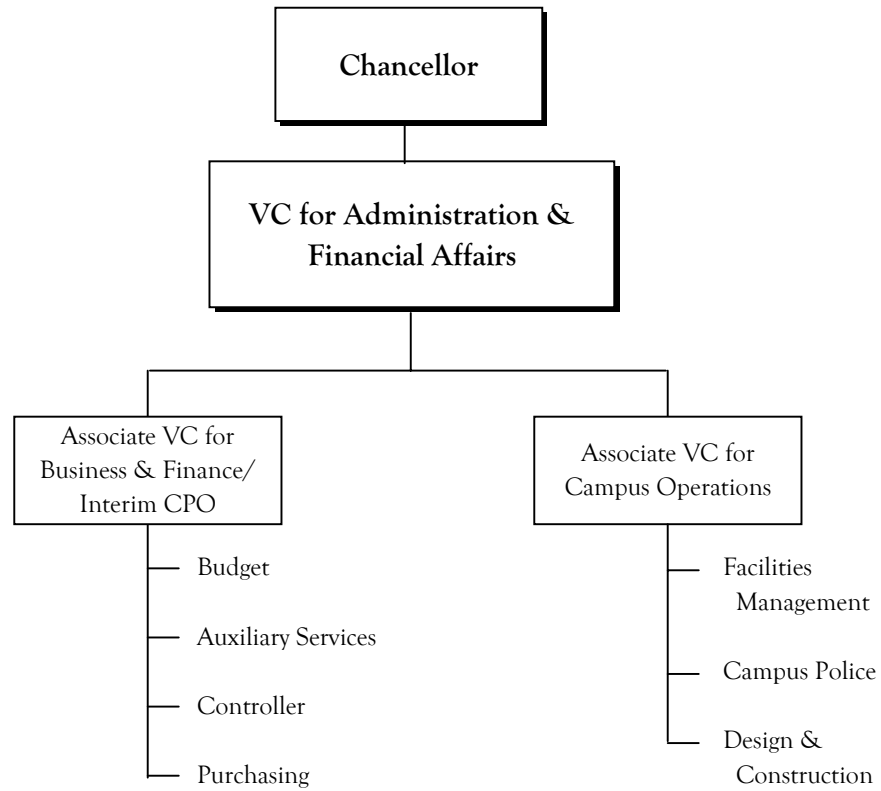


Figure 9
Organizational Chart for Alumni & Development

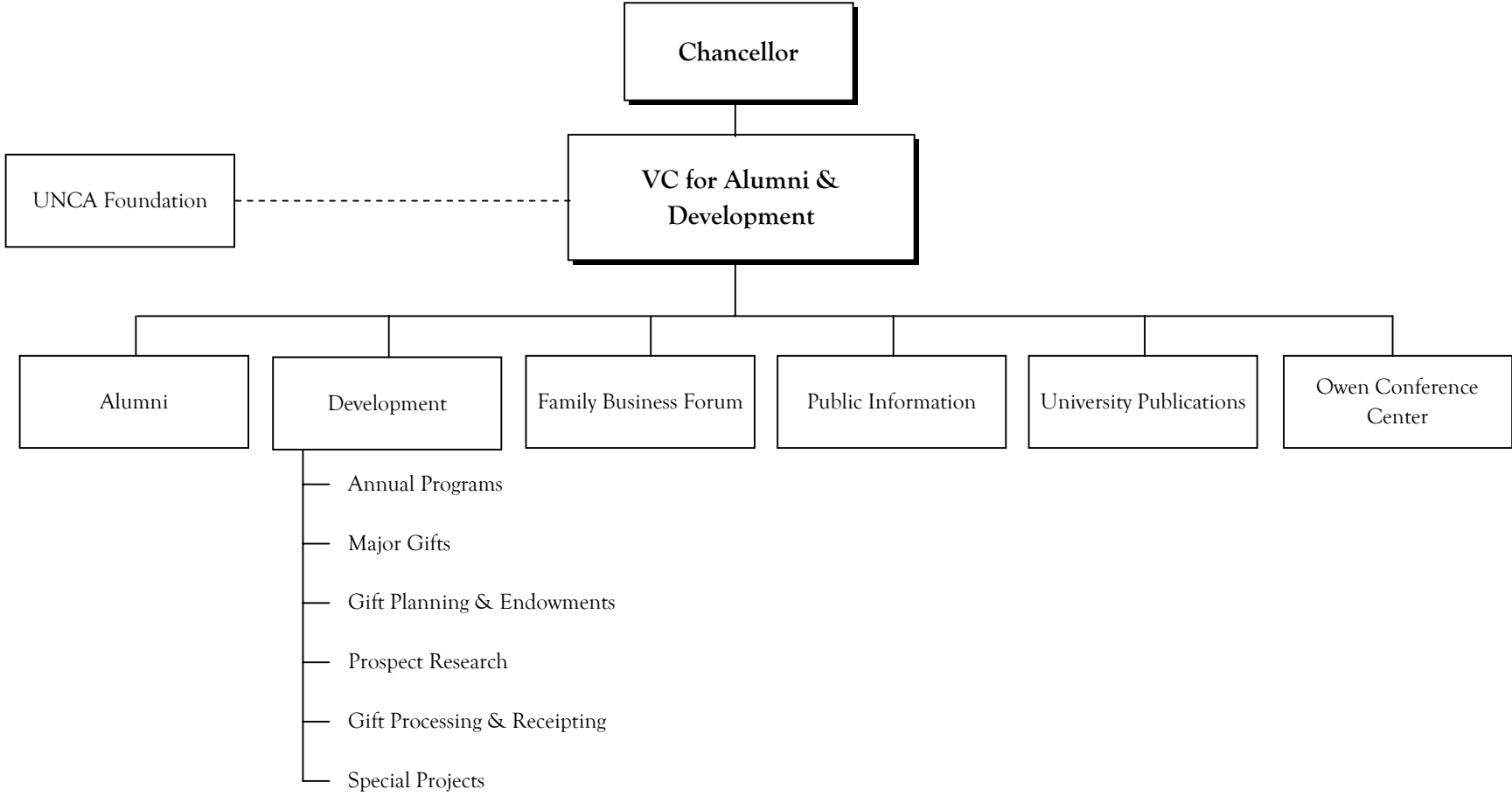


Table 39

Organization and Personnel
2005-06

Office of the Chancellor

Chancellor	Anne Ponder
Assistant to the Chancellor & Director of Internal Affairs	Christine Riley
Special Assistant to the Chancellor for External Affairs.....	Alan Thornburg
Director of Athletics.....	Janet Cone
Dir. of Diversity & Multicultural Affairs/Affirmative Action Officer.....	Don Locke
Internal Auditor.....	Tricia Cody
NC Center for Creative Retirement	Ron Manheimer
University General Counsel.....	Tom Lawton
Director of Human Resources	Elizabeth Bagwell
Director of Institutional Research	Archer Gravely

Academic and Student Affairs

Provost & Vice Chancellor for Academic & Student Affairs	Mark Padilla
Associate VCAA - Natural Sciences	Kathy Whatley
Associate VCAA - Social Sciences.....	Lisa Friedenber
Associate VCAA - Humanities	Bill Spellman
Associate VCAA University Programs	Edward Katz
Associate Vice Chancellor for Academic & Student Affairs	Patricia McClellan
Assistant Vice Chancellor for Student Affairs	Keith Ray
Dean of Student Affairs	Carol Schramm
Director of Admissions and Financial Aid	Scot Schaeffer
Chief Information Officer	James Kuhlman (Interim)
Director of Leadership Programs	Gerald Goertz, Jr. (Interim)
University Librarian	James Kuhlman
Director of Media and Teleconference Center.....	Rudy Moorrees
Chief Research Officer.....	Greg Kormanik
Director of Sponsored Scholarship & Programs	Gerard Voos
Director of Advising & Registration Services	Ellen Perry & Calley Stevens (Interim Co-Directors)
Director of Center for Career Dev. & Community Partnerships	Eileen Buecher
Director of Disability Services.....	Heidi Kelley
Director of Campus Recreation & Highsmith Union	John Bucher (Interim)
Registrar	Debbie Race (Interim)
Director of SAIL (Student Activities & Integrative Learning).....	Meg Dutnell
Assoc. Dir. of SAIL: Student Organizations & Curricular Liaison	Mary Chakales
Assistant Director of SAIL: Multicultural Organizations & Events	Deirdre Wiggins
Assistant Director of SAIL: Multicultural Student Development	Calvin A. Kelly
Director of Study Away Programs	Pete Williams
Director of Writing Center.....	Mary Alm
Director of Dining Services.....	Danny Dawkins
Director of Housing and Residence Life	Nancy Williams
Director of Counseling Center	Maggie Weshner
Director of Student Health Services	Eric Pyeritz
Director of Health & Wellness Development	Maggie Smith

Academic Departments/Programs by Division

Humanities

Art, Chair	Robert Dunning
Classics, Chair	Sophie Mills
Conferences & Institutes, Director	Ann Martin
Drama, Chair	Rob Bowen
Foreign Languages, Chair	Greta Trautman
History, Chair	Grant Hardy
Literature and Language, Chair	Gwen Ashburn
Masters in Liberal Arts, Director	Melissa Burchard
Music, Chair	Wayne Kirby
Philosophy, Chair	Gordon Wilson

Natural Sciences:

Atmospheric Science, Chair	Alex Huang
Biology, Chair	Betsy Wilson
Chemistry, Chair	Keith Krumpe
Computer Science, Chair	Dean Brock
Environmental Studies, Chair	Kevin Moorhead
Joint UNCA/NCSU Engineering Director.....	Yusef Fahmy
Mathematics, Chair	David Peifer
Multimedia Arts and Sciences, Chair	Lorraine Walsh
Physics, Chair	Randy Booker

Social Sciences:

Asheville Graduate Center, Director	Sandra Byrd
Center for Teaching & Learning, Director.....	Bruce Larson
Economics, Chair	Joe Sulock
Education, Chair	Mark Sidelnick
Extension & Distance Education, Director.....	Elaine Fox
Health and Wellness, Chair.....	Keith Ray
Management and Accountancy, Chair	Claudel McKenzie
Mass Communication, Chair	Alan Hantz
Political Science, Chair	Dolly Mullen
Psychology, Chair	Tracy Brown
Sociology, Chair	Marcia Ghidina

University Programs:

Director of Africana Studies	Afaf Omer
Director of Arts & Ideas	Scott Walters
Director of Cultural Events Office	Bunny Halton-Subkis
Director of Honors.....	Merritt Moseley
Director of Humanities.....	Jeanne McGlenn
Director of Interdisciplinary Programs	Pamela Nickless
Director of International Studies Programs	Linda Cornett
Director of Teaching Fellows	Brenda Hopper
Director of Undergraduate Research.....	Virginia Derryberry
Director of Women's Studies.....	Tracey Rizzo

Administration, Financial and External Affairs

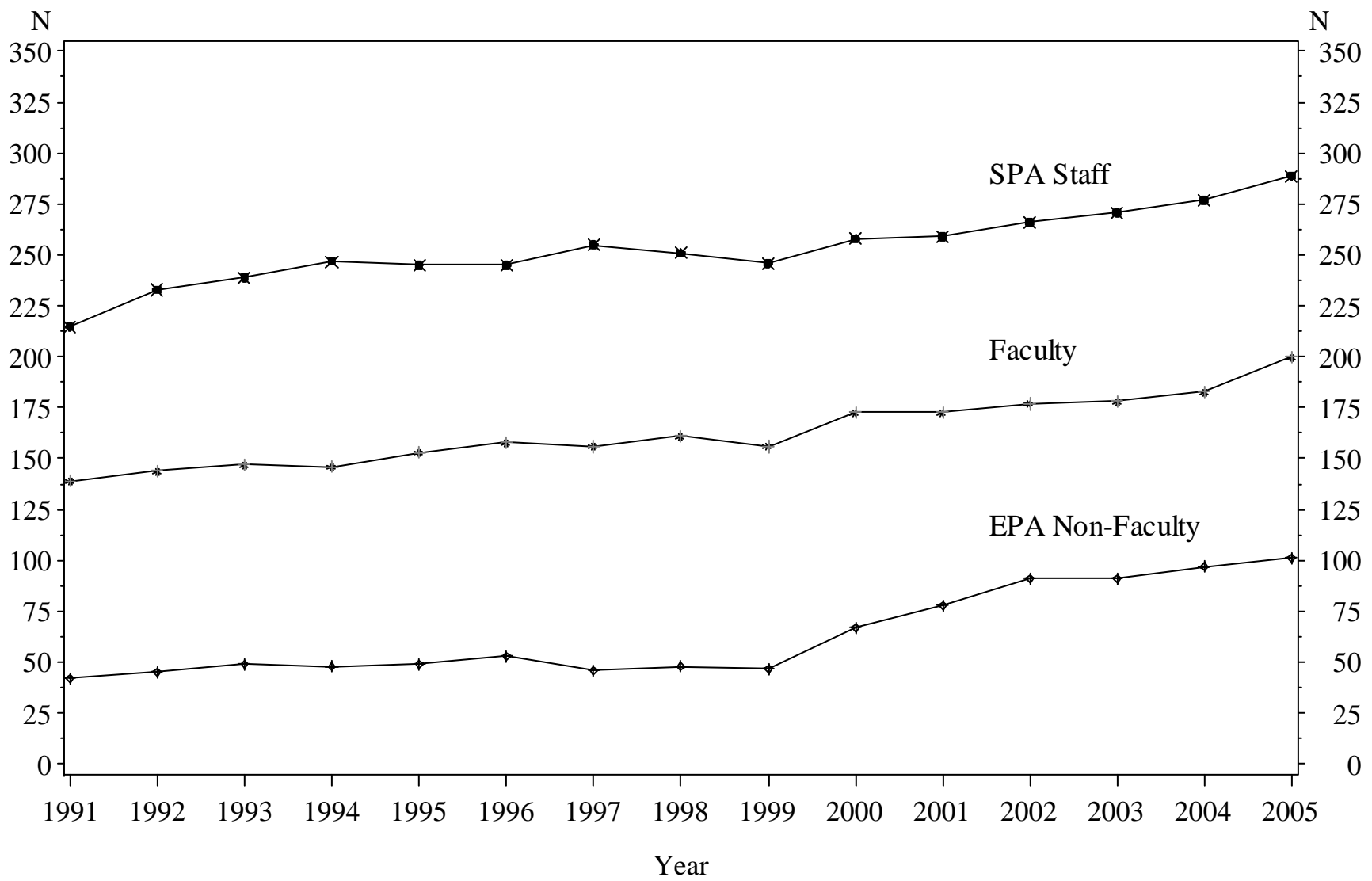
Associate Vice Chancellor for Business & Finance, Interim CFO.....	Bill Styres
Associate Vice Chancellor for Campus Operations	Steve Baxley
Director of Auxiliary Services	David Perkins
Director of Campus Police.....	Steve Lewis
Director of Design and Construction	Eugene Moore
Director of Facilities Management.....	David Todd
Director of Purchasing	Betty Ponder
University Budget Officer	Steve Honeycutt
University Controller	Jolene Elkins, CPA

Alumni & Development

Vice Chancellor for Alumni & Development	William P. Massey
Associate Vice Chancellor for Alumni.....	Kevan Frazier
Associate Vice Chancellor for Development	Alex Comfort
Assistant Vice-Chancellor for Annual Programs.....	Julie Heinitsh
Assistant Vice Chancellor of Special Projects	Tim McClain
Executive Director, Family Business Forum	Richard Lasher
Annual Fund Officer	Rebecca Lamb
Director of Gift Planning & Endowments	Gage Brogan
Budget Officer	Julia Fuog Caudill
Director of Public Information	Merianne Epstein
Director of University Publications	Ashlea Allen
Director of Prospect Research/Proposal Writer	Joanne McKnight

Figure 10: Full-Time Employees by Type: 1991-2005

61



Notes:

- (1) EPA non-faculty employees include administrators and athletic coaches
- (2) Arboretum employees are not included

Table 40

Employees by Employment Status, Job Class, Sex and Race
Fall 2005

Job Class		Full-Time			Part-Time			Status
		Female	Male	Subtotal	Female	Male	Subtotal	Totals
Exec/Admin/Mgmt	White	19	23	42	0	0	0	42
	Black	0	0	0	0	1	1	1
	Hispanic	0	1	1	0	0	0	1
	Class Total	19	24	43	0	1	1	44
Faculty	White	72	107	179	53	53	106	285
	Black	3	6	9	2	1	3	12
	Hispanic	2	1	3	0	0	0	3
	Asian	2	4	6	1	0	1	7
	Am Indian	0	2	2	0	0	0	2
	Class Total	79	120	199	56	54	110	309
Other Professional	White	57	46	103	2	1	3	106
	Black	6	2	8	0	0	0	8
	Hispanic	0	1	1	0	0	0	1
	Asian	0	1	1	0	0	0	1
	Class Total	63	50	113	2	1	3	116
Technical/Para Prof	White	22	13	35	2	1	3	38
	Black	1	2	3	0	0	0	3
	Asian	1	0	1	0	0	0	1
	Class Total	24	15	39	2	1	3	42
Clerical	White	76	16	92	12	0	12	104
	Black	8	1	9	0	0	0	9
	Class Total	84	17	101	12	0	12	113
Skilled Crafts	White	2	16	18	0	0	0	18
	Black	0	2	2	0	0	0	2
	Class Total	2	18	20	0	0	0	20
Service/Maintenance	White	24	40	64	0	0	0	64
	Black	1	9	10	0	1	1	11
	Hispanic	0	2	2	0	0	0	2
	Asian	1	0	1	0	0	0	1
	Class Total	26	51	77	0	1	1	78
Race Totals	White	272	261	533	69	55	124	657
	Black	19	22	41	2	3	5	46
	Hispanic	2	5	7	0	0	0	7
	Asian	4	5	9	1	0	1	10
	Am Indian	0	2	2	0	0	0	2
	Class Total	297	295	592	72	58	130	722
Total UNCA		297	295	592	72	58	130	722

NOTE: Does not include Arboretum employees.

Table 41

Full-time Instructional Faculty by Rank, Sex and Tenure Status
Five-Year Trend

Year	Rank	Male		Female		Total	
		N	Tenured	N	Tenured	N	Tenured
2001	Professor	45	44	7	7	52	51
	Assoc Professor	25	23	20	18	45	41
	Asst Professor	23	1	28	1	51	2
	Instructor	2	0	1	0	3	0
	Lecturer	6	0	11	0	17	0
	Research/Visiting	2	0	3	0	5	0
	Total	103	68	70	26	173	94
2002	Professor	45	44	6	6	51	50
	Assoc Professor	27	26	21	20	48	46
	Asst Professor	21	1	29	1	50	2
	Instructor	2	0	1	0	3	0
	Lecturer	9	0	11	0	20	0
	Research/Visiting	2	0	3	0	5	0
	Total	106	71	71	27	177	98
2003	Professor	46	46	6	6	52	52
	Assoc Professor	25	24	23	22	48	46
	Asst Professor	24	1	26	0	50	1
	Instructor	2	0	0	0	2	0
	Lecturer	12	0	10	0	22	0
	Research/Visiting	2	0	2	0	4	0
	Total	111	71	67	28	178	99
2004	Professor	48	47	8	8	56	55
	Assoc Professor	26	22	23	23	49	45
	Asst Professor	25	1	22	1	47	2
	Lecturer	15	0	12	0	27	0
	Research/Visiting	1	0	2	0	3	0
	Total	115	70	67	32	182	102
2005	Professor	49	48	10	10	59	58
	Assoc Professor	27	26	27	26	54	52
	Asst Professor	24	1	19	1	43	2
	Instructor	0	0	1	0	1	0
	Lecturer	18	0	20	0	38	0
	Research/Visiting	2	0	2	0	4	0
Total	120	75	79	37	199	112	

Table 42

Full-Time Instructional Faculty* with Terminal Degrees by Rank and Department
Fall 2005

Department	Professor		Associate Professor		Assistant Professor		Instructor		Lecturer		Total	
	Total N	Pct w/ TD	Total N	Pct w/ TD	Total N	Pct w/ TD	Total N	Pct w/ TD	Total N	Pct w/ TD	Total N	Pct w/ TD
Art	3	100.0	3	100.0	1	100.0	-	-	2	50.0	9	88.9
Atmospheric Sciences	1	100.0	1	100.0	1	100.0	-	-	-	-	3	100.0
Biology	3	100.0	3	100.0	3	100.0	-	-	-	-	9	100.0
Chemistry	2	100.0	2	100.0	4	100.0	-	-	1	100.0	9	100.0
Classics	-	-	2	100.0	2	100.0	-	-	1	100.0	5	100.0
Computer Science	2	100.0	2	100.0	2	100.0	-	-	2	0.0	8	75.0
Drama	-	-	3	100.0	3	100.0	-	-	-	-	6	100.0
Economics	4	100.0	3	100.0	1	100.0	-	-	-	-	8	100.0
Education	2	100.0	3	100.0	2	100.0	-	-	2	0.0	9	77.8
Environmental Studies	4	100.0	2	100.0	1	100.0	1	0.0	-	-	8	87.5
Foreign Languages	2	100.0	3	100.0	2	50.0	-	-	5	20.0	12	58.3
Health & Wellness	-	-	1	100.0	1	100.0	-	-	2	0.0	4	50.0
History	2	100.0	2	100.0	3	100.0	-	-	-	-	7	100.0
Humanities	-	-	-	-	-	-	-	-	4	25.0	4	25.0
Literature	9	100.0	2	100.0	2	100.0	-	-	4	50.0	17	88.2
Management	4	75.0	2	50.0	4	100.0	-	-	2	0.0	12	66.7
Mass Communication	3	100.0	1	100.0	-	-	-	-	2	50.0	6	83.3
Mathematics	2	100.0	4	100.0	3	100.0	-	-	5	20.0	14	71.4
Multimedia Arts and Sciences	-	-	-	-	3	100.0	-	-	1	0.0	4	75.0
Music	1	100.0	1	100.0	3	100.0	-	-	1	0.0	6	83.3
Philosophy	1	100.0	3	100.0	1	100.0	-	-	-	-	5	100.0
Physics	5	100.0	-	-	-	-	-	-	1	0.0	6	83.3
Political Science	3	100.0	2	100.0	2	100.0	-	-	-	-	7	100.0
Psychology	4	100.0	3	100.0	2	100.0	-	-	2	100.0	11	100.0
Sociology	2	100.0	6	100.0	1	100.0	-	-	1	0.0	10	90.0
Total	59	98.3	54	98.1	47	97.9	1	0.0	38	28.9	199	84.4

*Includes visiting and research professors with teaching duties

Table 43
Full-time Instructional Faculty Salaries by Rank
Five-Year Trend

Year	Rank	N	Salary			
			Mean	Min	Max	Total Outlay
2001	Professor	52	68,221	48,378	100,625	3,547,511
	Associate Professor	45	51,233	42,719	75,625	2,305,489
	Assistant Professor	51	43,002	38,000	61,138	2,193,083
	Lecturer	17	38,551	27,405	53,748	655,374
	University Total	173	52,167	27,405	100,625	9,024,934
2002	Professor	51	69,450	48,378	100,625	3,541,931
	Associate Professor	48	51,121	42,794	75,625	2,453,821
	Assistant Professor	50	43,648	38,200	62,638	2,182,396
	Lecturer	20	37,285	27,405	53,748	745,702
	University Total	177	52,226	27,405	100,625	9,244,082
2003	Professor	52	69,198	50,000	100,625	3,598,318
	Associate Professor	48	52,144	43,794	98,562	2,502,893
	Assistant Professor	50	44,837	40,000	62,125	2,241,870
	Lecturer	22	35,648	28,625	53,748	784,253
	University Total	178	52,727	28,625	100,625	9,385,459
2004	Professor	56	74,514	53,489	105,098	4,172,808
	Associate Professor	49	54,872	47,529	83,603	2,688,718
	Assistant Professor	47	48,568	41,120	69,045	2,282,715
	Lecturer	27	38,188	28,000	58,928	1,031,077
	University Total	182	56,678	28,000	105,098	10,315,318
2005	Professor	59	75,196	55,569	106,098	4,436,536
	Associate Professor	54	55,814	48,519	84,753	3,013,948
	Assistant Professor	43	48,551	42,500	72,195	2,087,684
	Lecturer	38	38,600	28,350	65,000	1,466,784
	University Total	199	56,510	28,350	106,098	11,245,502

NOTE: Instructors, research and visiting professors are not shown in detail but are included in University Total

Table 44
Faculty Salary Comparisons
2004-05

	Professor	Associate Professor	Assistant Professor
UNC Asheville	74,500	54,700	48,200
AAUP-Public Comparisons			
Doctoral Institutions	104,411	71,077	60,567
Comprehensive	77,900	61,528	51,339
Baccalaureate	74,408	57,468	47,834
UNC System Comparisons			
Appalachian State	73,000	60,200	53,200
East Carolina	84,000	63,900	56,900
Elizabeth City	64,800	58,300	50,300
Fayetteville State	71,700	60,500	55,300
NC A & T	87,100	66,900	61,700
NC Central	78,900	62,400	51,600
North Carolina State	94,800	70,300	61,900
UNC-Chapel Hill	112,700	77,200	65,800
UNC-Charlotte	89,000	65,700	57,100
UNC-Greensboro	86,400	63,200	54,800
UNC-Pembroke	77,000	56,800	49,600
UNC-Wilmington	75,300	60,600	52,000
Western Carolina	72,200	58,400	52,000
Winston-Salem	68,700	57,900	56,800
UNC System Average	80,673	62,467	55,147
Peer Institution Comparisons			
Bucknell University (PA)	98,100	71,700	57,800
Eastern Connecticut State Univ	83,300	63,500	51,400
Evergreen State College (WA)	N/A	N/A	N/A
Furman University (SC)	81,200	60,600	50,500
Lafayette College (PA)	100,200	75,200	58,800
Mary Washington College (VA)	74,100	57,200	44,600
Massachusetts C. of Liberal Arts	65,200	55,000	43,700
New College of Florida	75,600	59,300	45,900
Ramapo College of New Jersey	93,000	73,000	54,700
Richard Stockton College (NJ)	95,100	72,600	53,500
St. Mary's College (MD)	79,900	58,700	48,500
SUNY College at Geneseo (NY)	67,300	56,600	48,800
Truman State University (MO)	65,400	51,500	42,200
Union College (NY)	91,100	67,800	54,800
Univ of Minnesota at Morris	70,100	54,900	42,600
Peer Institution Average	81,400	62,686	49,843

Source: *The Chronicle of Higher Education*, April 22, 2005

Fiscal Resources

Table 45

Current Fund Revenues and Expenditures: Five-Year Trend

Revenue Source	2000-01*		2001-02		2002-03		2003-04		2004-05	
	Amount	Percent	Amount	Percent	Amount	Percent	Amount	Percent	Amount	Percent
Tuition and Fees	5,789,896	12.0	6,289,733	13.0	7,988,984	14.2	12,690,775	18.5	14,413,409	19.1
Grants and Contracts- operation			3,454,571	7.1	3,588,269	6.4	4,618,012	6.7	4,499,973	6.0
Sales and Services of Auxilary Ent.			9,170,299	18.9	9,735,937	17.4	8,355,537	12.1	9,473,995	12.6
Other Operating Sources			328,320	0.7	324,716	0.6	248,040	0.4	328,670	0.4
State Appropriations	25,756,995	53.3	24,213,142	49.9	22,870,180	40.8	25,495,221	37.1	27,087,456	36.0
Grants - nonoperating			175,113	0.4	154,384	0.3	195,276	0.3	2,553,377	3.4
Gifts			1,979,730	4.1	1,503,989	2.7	1,012,967	1.5	1,370,743	1.8
Investment income			284,279	0.6	708,898	1.3	1,134,082	1.6	1,027,336	1.4
Other nonoperating revenue			1,899	0.0	5,293	0.0	4,637	0.0	5,056	0.0
Other revenues and additions			2,592,528	5.3	9,219,929	16.4	15,028,921	21.8	14,555,227	19.3
Total Revenues & Additions	48,320,959		48,489,614		56,100,579		68,783,468		75,315,242	
Expenses and other Deductions										
Instruction	15,493,032	31.0	15,621,382	30.9	15,967,018	30.6	17,577,957	30.8	19,199,716	29.2
Research	698,419	1.4	546,212	1.1	598,567	1.1	465,019	0.8	555,845	0.8
Public Service	3,462,065	6.9	3,017,670	6.0	3,317,628	6.4	4,016,609	7.0	5,553,990	8.4
Academic Support	3,382,244	6.8	2,807,210	5.5	3,380,341	6.5	3,230,901	5.7	3,549,774	5.4
Student Services	2,889,779	5.8	2,975,111	5.9	2,956,356	5.7	3,224,353	5.7	3,113,871	4.7
Institutional Support	4,619,405	9.3	4,513,674	8.9	4,566,149	8.8	6,020,338	10.6	5,974,275	9.1
Physical Plant	4,891,825	9.8	5,118,840	10.1	4,512,033	8.6	5,114,847	9.0	6,654,601	10.1
Depreciation			4,085,640	8.1	4,192,562	8.0	4,512,358	7.9	5,209,134	7.9
Scholarships and Fellowships	2,779,781	5.6	1,631,857	3.2	2,009,523	3.9	1,986,815	3.5	2,060,047	3.1
Auxiliary enterprises			8,528,629	16.9	8,710,458	16.7	9,761,569	17.1	12,207,825	18.6
Nonoperating Exp. and Deduct.			1,751,118	3.5	1,954,495	3.7	1,068,914	1.9	1,659,951	2.5
Total Expenses and Deductions	49,917,632		50,597,343		52,165,130		56,979,680		65,739,029	

NOTE: Report categories changed in 2001-02; comparable data for previous years are not available

Source: IPEDS F-1 from UNCA Financial Affairs

Table 46
Operating Expenditures by Function
2004-05

	Salaries & Benefits	Supplies & Materials	Services	Scholarships & Fellowships	Utilities	Depreciation	Total
Instruction	16,867,523	1,257,632	1,074,562	0	0		19,199,716
Research	349,479	104,458	101,907	0	0		555,845
Public Service	3,076,124	747,076	1,648,225	0	82,565		5,553,991
Academic Support	2,423,918	955,396	170,459	0	0		3,549,774
Student Services	2,134,298	168,795	810,778	0	0		3,113,871
Institutional Support	4,413,470	372,213	1,160,365	0	25		5,946,073
Operations & Maintenance/Plant	3,558,582	1,734,091	300,983	0	1,060,945		6,654,600
Student Financial Aid	24,670	0	3,532	2,060,046	0		2,088,249
Auxiliary Enterprises	3,706,092	3,509,789	4,192,243	0	799,701		12,207,825
Depreciation						5,209,134	5,209,134
Total Operating Expenses	36,554,156	8,849,450	9,463,054	2,060,046	1,943,236	5,209,134	64,079,078
Percent of Total	57%	14%	15%	3%	3%	8%	100%

Source: UNCA Annual Financial Report

Table 47
Tuition and Fees per Year

	Academic Year					5-Year Pct Change
	01-02	02-03	03-04	04-05	05-06	
Tuition:						
In-State:						
Full-Time	1,196	1,592	1,672	1,896	1,897	58.6
3/4-Time	898	1,194	1,254	1,422	1,422	58.4
1/2-Time	598	796	836	948	948	58.5
1/4-Time	298	398	418	474	474	59.1
Out-of-State:						
Full-Time	8,658	9,998	10,497	11,097	11,697	35.1
3/4-Time	6,494	7,498	7,872	8,322	8,772	35.1
1/2-Time	4,330	5,000	5,248	5,548	5,848	35.1
1/4-Time	2,164	2,500	2,624	2,774	2,924	35.1
Fees (Full-Time):						
Athletic	420	447	479	483	528	25.7
Health Services	126	132	138	141	141	11.9
Student Activities:						
Campus Commission	93	101	104	104	104	11.8
Recreation	121	121	121	122	133	9.9
Cultural/Special Events	36	40	40	40	48	33.3
Student Center Operations	109	121	132	172	238	118.3
Debt Service	220	220	220	220	220	0.0
Educational & Technology	105	110	123	143	147	40.0
Parking	70	70	70	70	70	0.0
Total	1,300	1,362	1,427	1,495	1,629	25.3
Room (Double Occupancy):						
Founders Hall	2,010	2,070	2,160	2,160	2,560	27.4
Mills Hall	2,190	2,290	2,560	2,800	3,200	46.1
South Ridge	2,220	2,290	2,560	2,800	3,200	44.1
West Ridge	2,220	2,290	2,560	2,800	3,200	44.1
Governor's Hall	-	-	-	3,050	3,450	-
Room (Single Occupancy):						
Governor's Village	2,500	2,550	2,900	2,800	3,200	28.0
Governor's Hall	-	-	-	3,550	4,150	-
Board:						
Meal Plan (Carte Blanc)	2,280	2,360	2,430	2,490	2,590	13.6

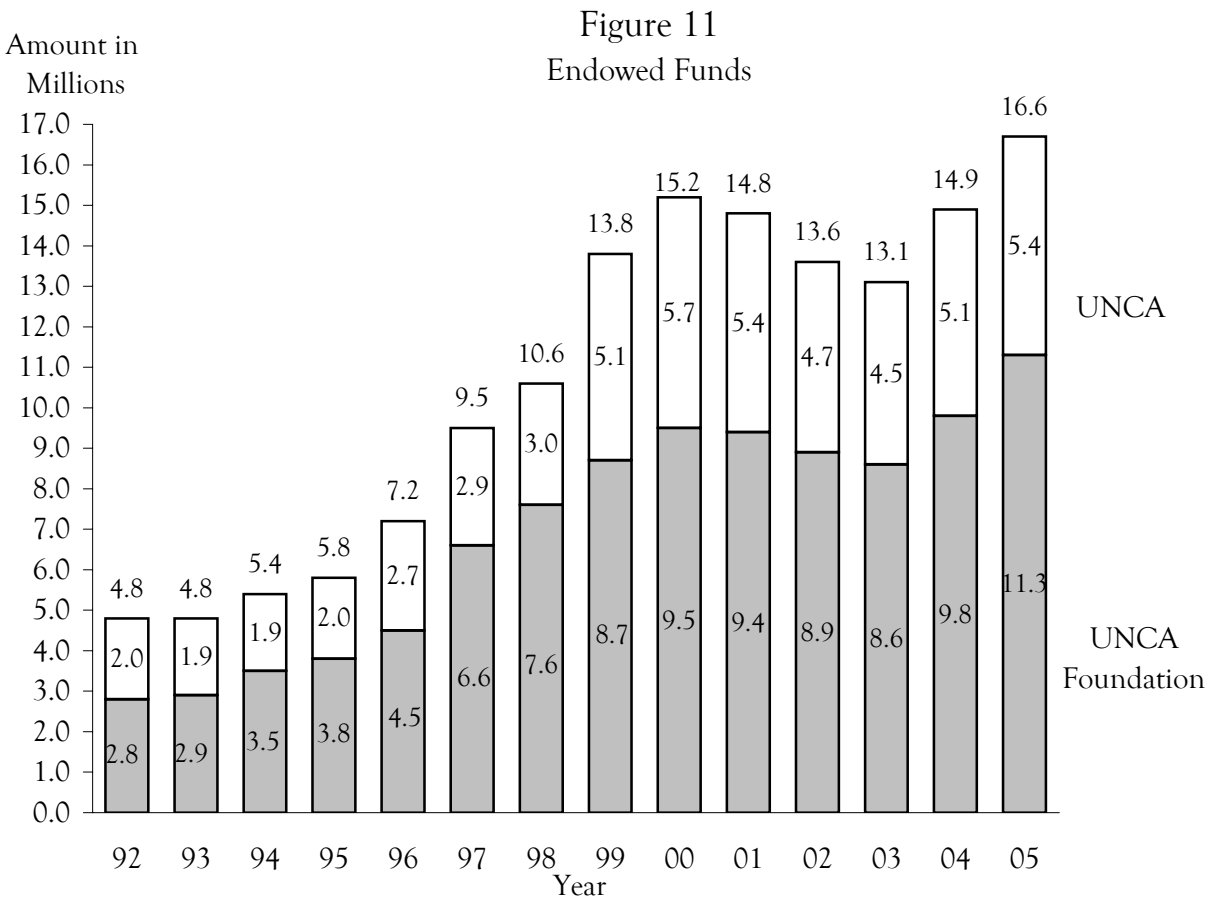
Source: Cashiers Office/Budget Office

Table 48

External Grants and Contracts Funding Amounts by Fiscal Year

	FY 1998	FY 1999	FY 2000	FY 2001	FY 2002	FY 2003	FY 2004	FY 2005
Total Submissions	39	53	49	52	63	64	81	51
Total Awards	25	44	44	40	19	46	61	30
Num of Different Investigators	21	30	27	40	15	31	54	30
Total Amount Awarded	\$374,730	\$2,759,605	\$1,604,253	\$1,210,975	\$369,418	\$991,007	\$4,781,215	\$1,327,827

Source: UNCA Sponsored Scholarship and Programs



Source: *University Controller*
Unaudited figures for 2004-05

Table 49
Source of Outright Gift Income by Year

	1999-00	2000-01	2001-02	2002-03	2003-04	2004-05
Alumni	121,979	150,769	186,251	133,712	133,951	661,941
Parents	24,027	86,313	32,887	42,391	39,344	138,812
Other Individuals	1,108,549	1,082,153	888,201	770,626	649,674	688,704
Foundations	388,810	1,357,961	277,445	389,900	350,598	299,945
Corporations	425,972	553,965	524,510	428,840	849,613	238,801
Religious Organizations	1,425	0	500	970	70	2,200
Fundraising Consortia	0	0	0	0	0	0
Other Organizations	54,245	34,945	73,781	131,077	17,099	14,124
Total Giving*	2,125,007	3,266,106	1,983,575	1,897,516	2,040,349	2,044,527

*Deferred giving not included

Source: *Voluntary Support of Education Survey*

Table 50
Alumni Donations

Fiscal Year	# Alumni of Record	Number Donors	Total Giving*	Giving Rate
1997-98	5,756	398	\$71,004	6.9%
1998-99	6,790	643	\$133,579	9.5%
1999-00	7,316	751	\$121,979	10.3%
2000-01	7,747	898	\$150,769	11.6%
2001-02	8,126	926	\$186,250	11.4%
2002-03	8,454	1,180	\$133,712	14.0%
2003-04	9,900	1,094	\$133,951	11.1%
2004-05	10,639	986	\$661,941	9.3%

*Deferred giving not included

Source: *Voluntary Support of Education Survey*

Table 51
Outright Gift Income Summary

	2000-01	2001-02	2002-03	2003-04	2004-05
Gifts for Current Operations					
Unrestricted	196,420	206,901	206,310	537,147	193,524
Restricted					
Academic Divisions	5,250	4,900	1,900	2,500	3,400
Faculty & Staff Compensation	0	0	0	0	0
Research	0	2,000	0	0	20,000
Public Service & Extension	0	0	0	0	0
Library	506	3,255	392	214	14
Operation and Maint. of Plant	1,485,403	101,700	35,400	10,513	1,785
Student Financial Aid	238,777	256,073	259,170	242,821	226,481
Athletics	269,962	251,186	266,615	218,138	321,757
Other	137,652	217,607	281,560	456,222	807,938
Total Current Operations	2,333,970	1,043,622	1,051,347	1,467,555	1,574,899
Gifts for Capital Purposes					
Property, Building, Equipment	329,071	219,128	601,118	353,577	32,320
Endowment - Unrestricted	0	0	11,200	10	93
Endowment - Restricted	597,845	718,409	232,187	217,578	425,670
Loan Funds	5,220	2,416	1,664	1,629	11,545
Total Capital Purposes	932,136	939,953	846,169	572,794	469,628
Total Outright Giving	3,266,106	1,983,575	1,897,516	2,040,349	2,044,527

Source: *Voluntary Support of Education Survey*

Figure 12

Campus Map

Click on the following link to go to the Campus Map:

<http://www.unca.edu/campusmap/>

Table 52
Building Inventory
Fall 2005

	Year Constructed	Building Cost	Estimated Replacement Cost	Accessible (Sq. Ft.)	Assignable (Sq. Ft.)	Gross (Sq. Ft.)
Academic and Administrative						
Carmichael Hall	1966	548,000	4,770,148	18,289	18,289	31,441
Carol Belk Theatre	1976	477,000	2,210,556	7,761	7,761	10,715
Dining Hall	1995	4,290,000	12,332,578	26,729	26,729	60,792
Health & Fitness Ctr	1997	6,075,600	10,820,092	44,423	44,501	53,000
Highsmith Univ. Ctr	2004	15,800,000	17,790,800	53,811	53,811	72,000
Justice Center	1963	1,205,732	10,471,057	15,855	35,919	51,780
Karpen Hall	1990	5,600,000	13,030,649	34,024	34,024	64,000
Lipinsky Hall	1964	791,758	7,795,120	21,631	21,631	38,173
Owen Hall	1979	1,809,259	7,329,740	30,105	30,105	47,366
Phillips Hall	1963	493,800	3,723,042	8,356	12,610	18,574
Plant Maint. Storage	1990	5,000	7,229	484	484	509
Plant Maintenance	1963	272,414	2,908,627	13,607	14,500	15,989
Print Services	2002	174,520	203,045	3,694	3,694	4,000
Ramsey (New Wing)	1990	6,400,000	11,401,817	43,736	43,736	55,926
Ramsey Library	1965	685,637	9,772,986	35,678	35,678	47,641
Reuter Center	2003	3,900,000	4,448,488	13,752	13,752	19,580
Rhoades Hall	1961	1,121,180	6,282,634	16,653	16,653	26,720
Rhoades Science Tower	1966	396,456	3,490,352	7,665	7,665	14,624
River Road Warehouse	1995	400,000	1,482,829	20,525	20,525	20,525
Robinson Hall	1988	6,175,000	14,892,170	40,940	40,940	64,014
Vance Hall	1967	94,000	814,416	2,164	2,164	4,222
Weizenblatt Hlth Ctr	1972	191,000	1,512,486	4,633	4,633	7,276
Zageir Hall	1975	1,130,000	6,282,634	18,365	18,365	30,863
Residential						
Chancellor Residence	1924	97,996	901,675	0	4,408	5,797
Ashe Dormitory	1969	132,670	1,279,796	0	4,619	6,537
Founders Hall	1982	2,943,027	12,216,233	42,786	42,786	63,719
Gardner Dormitory	1967	146,000	1,279,796	168	4,006	6,648
Governors Hall	2003	11,500,000	13,117,337	36,098	36,098	59,500
Hoey Dormitory	1969	132,670	1,279,796	0	4,595	6,537
Mills Hall	1987	4,250,000	12,216,233	41,877	41,877	64,840
Moore Dormitory	1967	146,000	1,279,796	0	4,158	6,648
Scott Dormitory	1967	146,000	1,279,796	898	4,090	6,648
South Ridge Dorm	1994	3,950,000	7,562,430	22,354	22,354	40,032
West Ridge Dormitory	1999	7,600,000	9,307,606	28,511	28,511	49,417

Fig 13: Percent of Space in Satisfactory Condition Fall 2004

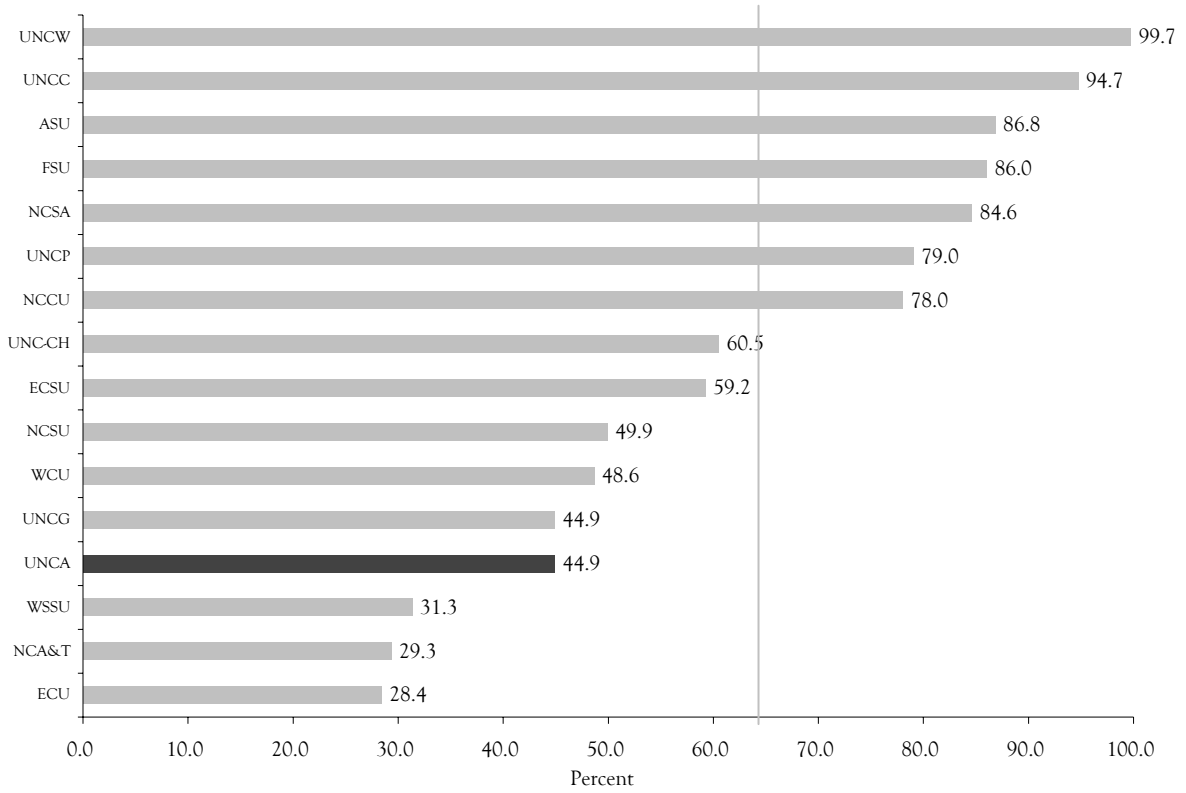
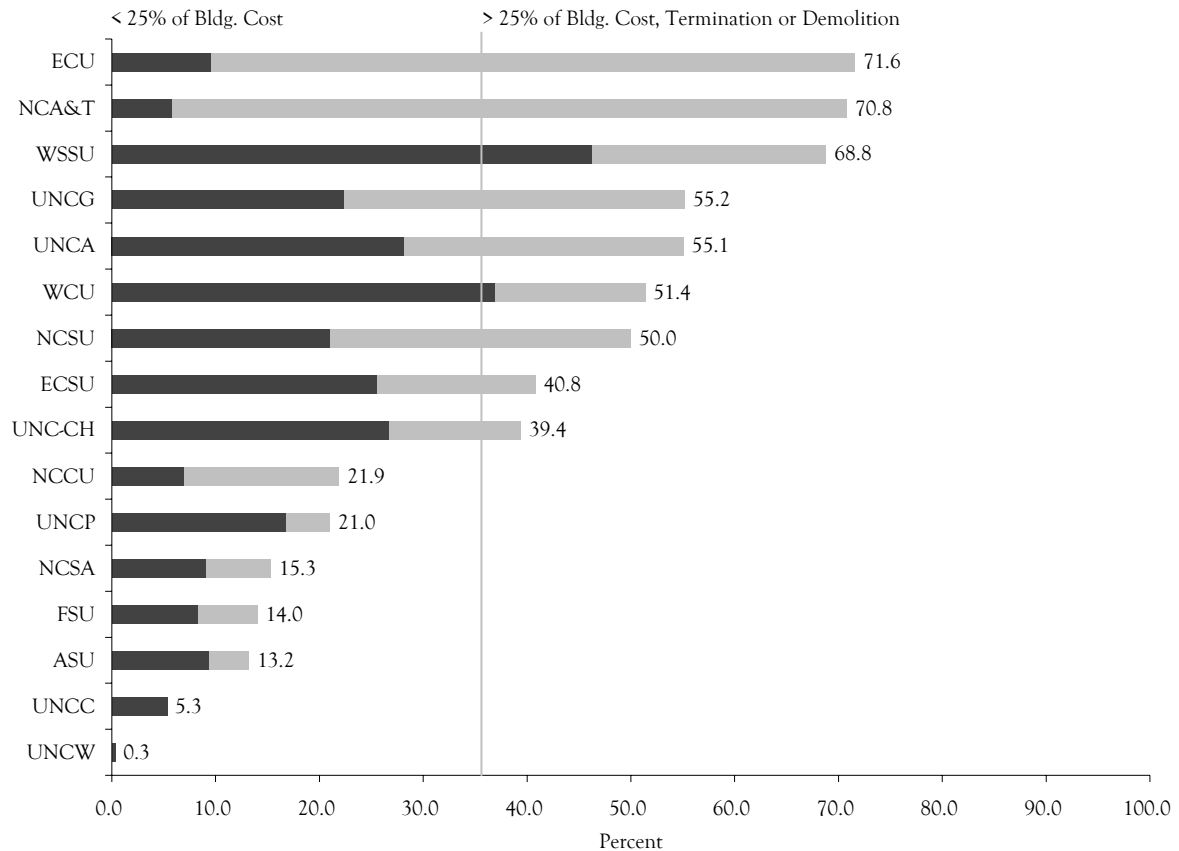


Fig 14: Percent of Space Needing Renovation by Cost Level, Fall 2004



Source: Facilities Inventory and Utilization Study (UNC General Administration)

Table 53
 Percentage of General Purpose Classrooms Utilized by Day and Time
 Fall 2005

Time	Percent of Classrooms in Use				
	Mon	Tue	Wed	Thu	Fri
08:00-08:30	36.2	48.9	34.0	46.8	34.0
08:30-09:00	36.2	48.9	34.0	46.8	34.0
09:00-09:30	89.4	100.0	91.5	95.7	68.1
09:30-10:00	89.4	100.0	91.5	93.6	68.1
10:00-10:30	87.2	100.0	89.4	93.6	83.0
10:30-11:00	83.0	97.9	85.1	95.7	80.9
11:00-11:30	89.4	97.9	93.6	97.9	83.0
11:30-12:00	53.2	97.9	78.7	97.9	48.9
12:00-12:30	53.2	95.7	78.7	95.7	48.9
12:30-01:00	78.7	2.1	87.2		80.9
01:00-01:30	70.2	2.1	74.5		70.2
01:30-02:00	87.2	83.0	89.4	83.0	85.1
02:00-02:30	63.8	83.0	63.8	83.0	55.3
02:30-03:00	85.1	83.0	87.2	83.0	66.0
03:00-03:30	74.5	48.9	80.9	46.8	40.4
03:30-04:00	76.6	51.1	80.9	48.9	40.4
04:00-04:30	61.7	51.1	57.4	51.1	19.1
04:30-05:00	59.6	46.8	57.4	44.7	19.1
05:00-05:30	61.7	46.8	53.2	51.1	10.6
05:30-06:00	25.5	42.6	19.1	51.1	8.5
06:00-06:30	59.6	80.9	72.3	66.0	8.5
06:30-07:00	59.6	78.7	72.3	63.8	
07:00-07:30	57.4	76.6	68.1	59.6	
07:30-08:00	57.4	70.2	68.1	53.2	
08:00-08:30	40.4	66.0	61.7	42.6	
08:30-09:00	12.8	29.8	21.3	19.1	
09:00-09:30		8.5	6.4	4.3	
09:30-10:00		2.1	2.1	2.1	

Table 54

Classrooms and Labs by Building
Fall 2005

	Classrooms				Class Labs				Open Labs			
	N	Capacity			N	Capacity			N	Capacity		
	Rms	Min	Mean	Max	Rms	Min	Mean	Max	Rms	Min	Mean	Max
Carmichael Hall	9	17	35.8	40	1	20	20.0	20	1	1	1.0	1
Carol Belk Theatre									2	24	24.5	25
Governor's Hall	1	20	20.0	20					1	20	20.0	20
Justice Center	1	25	25.0	25	1	35	35.0	35	1	10	10.0	10
Karpen Hall	18	12	30.8	74	5	10	20.4	42	4	6	14.5	20
Lipinsky Hall	1	30	30.0	30	1	75	75.0	75	15	1	5.8	16
Owen Hall	4	30	40.0	50	8	10	15.6	25	10	1	6.1	37
Ramsey Library									4	0	10.0	22
Rhoades/Robinson	5	30	64.2	180	20	12	22.1	32	19	1	8.6	20
Westridge Hall									2	1	1.0	1
Zageir Hall	8	20	32.5	40	2	20	22.5	25	4	3	7.3	20
Total	47	12	36.0	180	38	10	22.2	75	63	0	8.3	37

Table 55

Residence Hall Capacity and Number of Students Housed

Residence Hall	2002			2003			2004			2005		
	Normal Capacity	Number Housed	Pct of Cap	Normal Capacity	Number Housed	Pct of Cap	Normal Capacity	Number Housed	Pct of Cap	Normal Capacity	Number Housed	Pct of Cap
Ashe Hall	25	25	100.0	25	25	100.0	26	24	92.3	25	24	96.0
Founders Hall	300	281	93.7	300	285	95.0	308	298	96.8	300	259	86.3
Gardner Hall	24	24	100.0	24	24	100.0	24	21	87.5	24	20	83.3
Governors Hall				184	181	98.4	188	184	97.9	184	171	92.9
Hoey Hall	24	25	104.2	25	25	100.0	26	21	80.8	25	20	80.0
Mills Hall	300	281	93.7	300	287	95.7	312	306	98.1	300	265	88.3
Moore Hall	29	29	100.0	29	29	100.0	29	29	100.0	29	26	89.7
Scott Hall	24	23	95.8	24	23	95.8	25	21	84.0	24	22	91.7
Sevier St Apts	44	43	97.7									
South Ridge Hall	112	105	93.8	112	111	99.1	116	111	95.7	112	110	98.2
Vance Hall							1	2	200.0			
West Ridge Hall	148	147	99.3	148	146	98.6	152	150	98.7	148	145	98.0
Woodland Hills Apts.							0	110				
Total Students	1,030	983	95.4	1,171	1,136	97.0	1,207	1,277	105.8	1,171	1,062	90.7

Table 56
Capital Improvements
Fall 2005

	Est. Cost	Est. Completion Date Project Length (Construction Period)
A. Projects Under Construction		
1. Carmichael Hall Replacement	5,524,200	Spring 2006
2. Physical Plant Building	6,318,900	Fall 2006
3. Science & Multi Media Building	22,203,200	Fall 2007
B. Projects in Planning - Funds Allocated		
1. Zageir Hall Renovation	2,569,100	Spring 2007
2. North Carolina Center for Health & Wellness	40,000,000	Fall 2008
C. Project in Planning - Awaiting Construction Funding		
1. Governor's Hall Phase 2	14,000,000	deferred
2. Pisgah House (private fundraising)	2,000,000	Fall 2007
3. Craft Campus	6,000,000	2007
D. Future Capital Projects - Unfunded		

Source: *Office of Design & Construction*

Table 57
Ramsey Library Resources
Five-Year Trend

	2001	2002	2003	2004	2005
Books, Serial Files, Gov. Docs.	378,031	254,179	255,805	259,396	262,283
Current Serial Subscriptions	2,034	2,014	1,795	1,857	4,810
Microforms	813,220	822,833	839,718	857,210	861,742
Audiovisual Materials	9,303	9,816	10,249	10,768	11,374

*Note: Current serial subscriptions count now includes those in electronic format not previously reported.

SOURCE: *Ramsey Library*

Table 58
Computing Facilities - Fall 2005

<i>Campus Network</i>			
A campus-wide network, constructed in summer 1998, provides Internet access in all campus buildings and dorm rooms.			
<i>Microcomputer Labs</i>			
Student Labs¹	Windows	Mac	Total
CH 242	25	-	25
HU 255	6	-	6
KH 036	21	-	21
KH 037	21	-	21
KH 316	-	17	17
OH 221	-	9	9
OH 228	13	-	13
RBH 006	21	9	30
RBH 223	-	19	19
RH 105 - Math	-	17	17
RH 141	21	-	21
RH 142 - Math	16	-	16
ZH 126	25	-	25
Total	169	71	240
Departmental Labs²			
Writing Center	4	-	4
Meteorology Lab	17	-	17
Library Classroom	15	-	15
Math Lab	5	2	7
RBH 004 - Computer Science	13	-	13
KH 245 - Multimedia	6	6	12
RBH 011 - Physics/Engineering	12	-	12
RBH 123 - Physics	10	-	10
Total	82	8	90
Library			
Media Center	4	-	4
Reference	20	-	20
Govt Docs	2	-	2
Total	26	0	26
Residence Halls			
South Ridge	6	1	7
West Ridge	6	1	7
Mills	6	2	8
Founders Hall	6	-	6
Governor's Hall	6	0	6
Total	30	4	34
Grand Total	307	83	390

¹ Labs available for general student use when classes not scheduled

² Labs reserved for classroom or specialized use only

Last updated: 01/18/06

Source: UNCA Computer Center, Ramsey Library, Academic Departments